

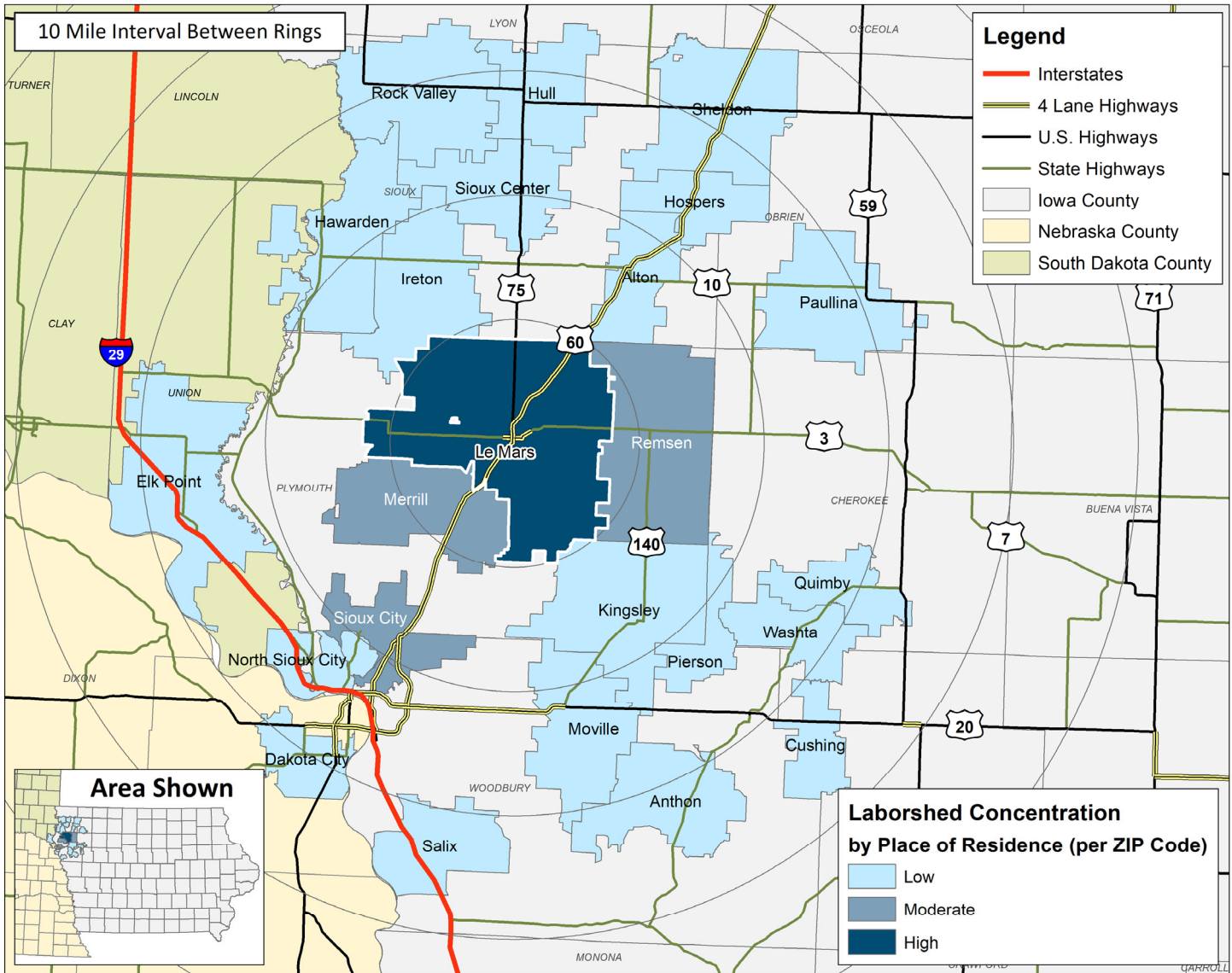
# LABOR CHARACTERISTICS



# WAREHOUSE & DISTRIBUTION

## LE MARS, IA LABORSHED AREA

CONCENTRATION OF RESPONDENTS WITHIN THE LABORSHED AREA WITH TRANSFERABLE EXPERIENCE/SKILLS BY PLACE OF RESIDENCE



Workers who have transferable experience/skills in the industry are currently commuting an average of 13 miles one way for work. Those who are likely to change/accept employment are willing to commute an average of 27 miles one way for the right employment opportunity.

FOR MORE INFORMATION REGARDING THE LE MARS, IA LABORSHED, CONTACT:

Le Mars Area Chamber of Commerce  
50 Central Avenue SE  
Le Mars IA, 51031

Phone: (712) 546-8821 | E-mail: [info@lemarschamber.org](mailto:info@lemarschamber.org)  
[www.lemarsiowa.com](http://www.lemarsiowa.com)

# LABOR CHARACTERISTICS



# WAREHOUSE & DISTRIBUTION

## ESTIMATED AVAILABLE LABOR PER OCCUPATIONAL CATEGORY:

- Automotive Body and Related Repairers - 297
- Automotive Service Technicians and Mechanics - 1,485
- Bus and Truck Mechanics and Diesel Engine Specialists - 297
- Cleaners of Vehicles and Equipment - 297
- Dispatchers, Except Police, Fire, and Ambulance - 594
- Heavy and Tractor-Trailer Truck Drivers - 3,564
- Industrial Machinery Mechanics - 297
- Inspectors, Testers, Sorters, Samplers, and Weighers - 296
- Installation, Maintenance, and Repair Workers, All Other - 891
- Laborers and Freight, Stock, and Material Movers - 2,079
- Light Truck or Delivery Services Drivers - 594
- Logisticians - 594
- Packers and Packers, Hand - 594
- Production Workers, All Other - 2,079
- Shipping, Receiving, and Traffic Clerks - 297
- Signal and Track Switch Repairers - 297
- Supervisors of Mechanics, Installers, and Repairers - 1,782
- Supervisors of Production and Operating Workers - 594
- Team Assemblers - 594
- Transportation, Storage, and Distribution Managers - 1,188



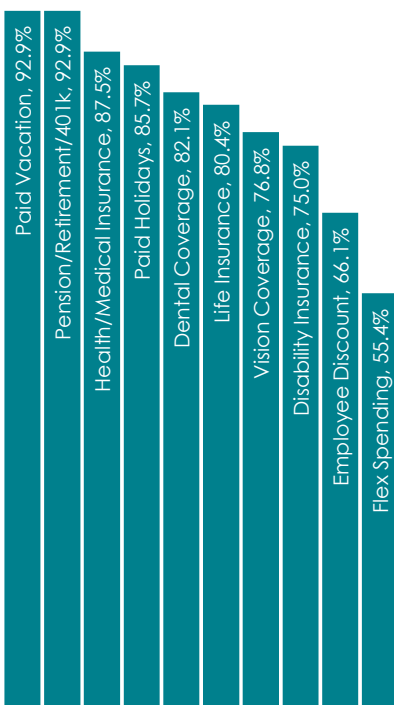
AN ESTIMATED TOTAL OF **18,710** PEOPLE IN THE LABORSHED AREA

## UNDEREMPLOYMENT (ESTIMATED):

- Low hours - 1.6% (78)
- Low income - 1.6% (78)
- Mismatch of skills - 4.8% (235)
- Total - 7.9% (387)

*(Individuals counted only once when estimating Total Underemployment.)*

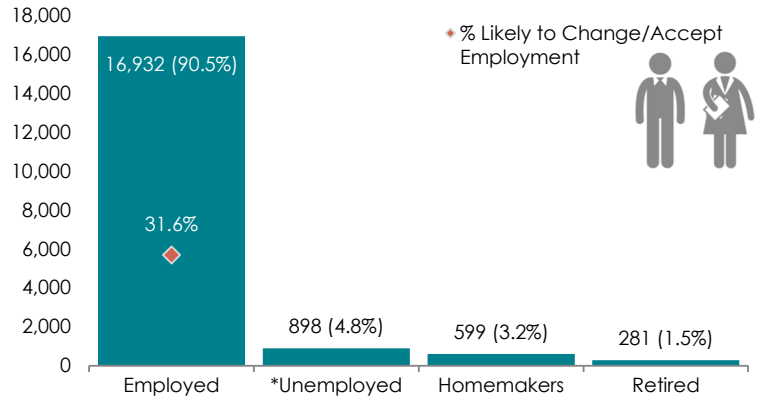
## CURRENT BENEFITS:



## DESIRED BENEFITS:



## ESTIMATED TOTAL BY EMPLOYMENT STATUS (PERCENTAGE):



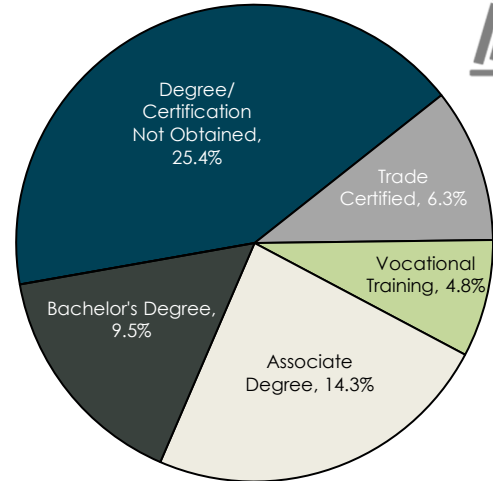
*\*Employment status is self-identified by the survey respondent. The unemployment percentage does not reflect the unemployment rate published by the U.S. Bureau of Labor Statistics, which applies a stricter definition.*

## EMPLOYMENT STATS:

- 61.9% paid an hourly wage
- 90.5% are/were employed full-time
- 9.5% are/were employed part-time
- 12.3% are/were self-employed
- 17.5% hold two or more jobs
- Currently working an average of 48 hours/week

## EDUCATIONAL LEVEL:

(60.3% HAVE AN EDUCATION BEYOND HIGH SCHOOL)



## TOP JOB SEARCH RESOURCES:

*(For those seeking employment opportunities, by use.)*

- Internet - 72.6%
  - [www.indeed.com](http://www.indeed.com)
  - [www.linkedin.com](http://www.linkedin.com)
  - [www.facebook.com](http://www.facebook.com)
- Networking through friends, family or acquaintances - 45.2%
- IowaWORKS Centers - 32.3%
- Newspapers - 24.2%
  - *Sioux City Journal*
  - *Le Mars Daily Sentinel*



# LABOR CHARACTERISTICS



## WAREHOUSE & DISTRIBUTION

OCCUPATION	OCCUPATIONAL CODE	MEAN WAGE	ENTRY WAGE	EXPERIENCED WAGE	MEDIAN WAGE	MEAN ANNUAL SALARY
Aircraft Mechanics and Service Technicians	49-3011	\$27.51	\$17.73	\$32.40	\$24.59	\$57,220
Automotive Body and Related Repairers	49-3021	\$20.78	\$13.77	\$24.29	\$19.64	\$43,227
Automotive Service Technicians and Mechanics	49-3023	\$20.28	\$13.25	\$23.80	\$20.68	\$42,191
Bus and Truck Mechanics and Diesel Engine Specialists	49-3031	\$21.73	\$16.08	\$24.56	\$21.72	\$45,202
Cargo and Freight Agents	43-5011	\$26.11	\$17.78	\$30.28	\$26.85	\$54,318
Dispatchers, Except Police, Fire, and Ambulance	43-5032	\$20.10	\$12.24	\$24.03	\$18.75	\$41,810
First-Line Supervisors of Mechanics, Installers, and Repairers	49-1011	\$34.57	\$23.04	\$40.33	\$34.71	\$71,905
First-Line Supervisors of Production and Operating Workers	51-1011	\$30.26	\$22.17	\$34.30	\$28.79	\$62,943
Heavy and Tractor-Trailer Truck Drivers	53-3032	\$19.51	\$12.20	\$23.17	\$19.97	\$40,586
Helpers--Installation, Maintenance, and Repair Workers	49-9098	\$14.43	\$9.30	\$17.00	\$14.62	\$30,017
Helpers--Production Workers	51-9198	\$18.30	\$13.21	\$20.84	\$17.33	\$38,055
Industrial Machinery Mechanics	49-9041	\$26.26	\$20.92	\$28.94	\$26.76	\$54,630
Inspectors, Testers, Sorters, Samplers, and Weighers	51-9061	\$19.68	\$14.69	\$22.17	\$18.10	\$40,927
Installation, Maintenance, and Repair Workers, All Other	49-9099	\$21.56	\$17.37	\$23.66	\$20.67	\$44,854
Light Truck or Delivery Services Drivers	53-3033	\$17.15	\$10.93	\$20.26	\$16.18	\$35,671
Logisticians	13-1081	\$28.09	\$19.18	\$32.54	\$26.60	\$58,425
Maintenance and Repair Workers, General	49-9071	\$19.31	\$13.60	\$22.16	\$19.69	\$40,157
Motor Vehicle Operators, All Other	53-3099	\$17.01	\$10.76	\$20.14	\$14.97	\$35,384
Production Workers, All Other	51-9199	\$15.15	\$11.25	\$17.10	\$14.49	\$31,508
Production, Planning, and Expediting Clerks	43-5061	\$24.32	\$17.02	\$27.97	\$23.31	\$50,587
Shipping, Receiving, and Traffic Clerks	43-5071	\$18.08	\$13.32	\$20.45	\$17.47	\$37,599
Weighers, Measurers, Checkers, and Samplers, Recordkeeping	43-5111	\$17.28	\$14.47	\$18.69	\$17.24	\$35,943

The 2021 Iowa Wage data for the Le Mars, IA Laborshed area was produced by the Labor Force & Occupational Analysis Bureau to provide communities local information on wages by occupation. The source of the wage and employment data is based on the May 2020 OES estimates. Additional occupational wage and employment data can be found at [www.iowalmi.gov/laborshed](http://www.iowalmi.gov/laborshed).

