

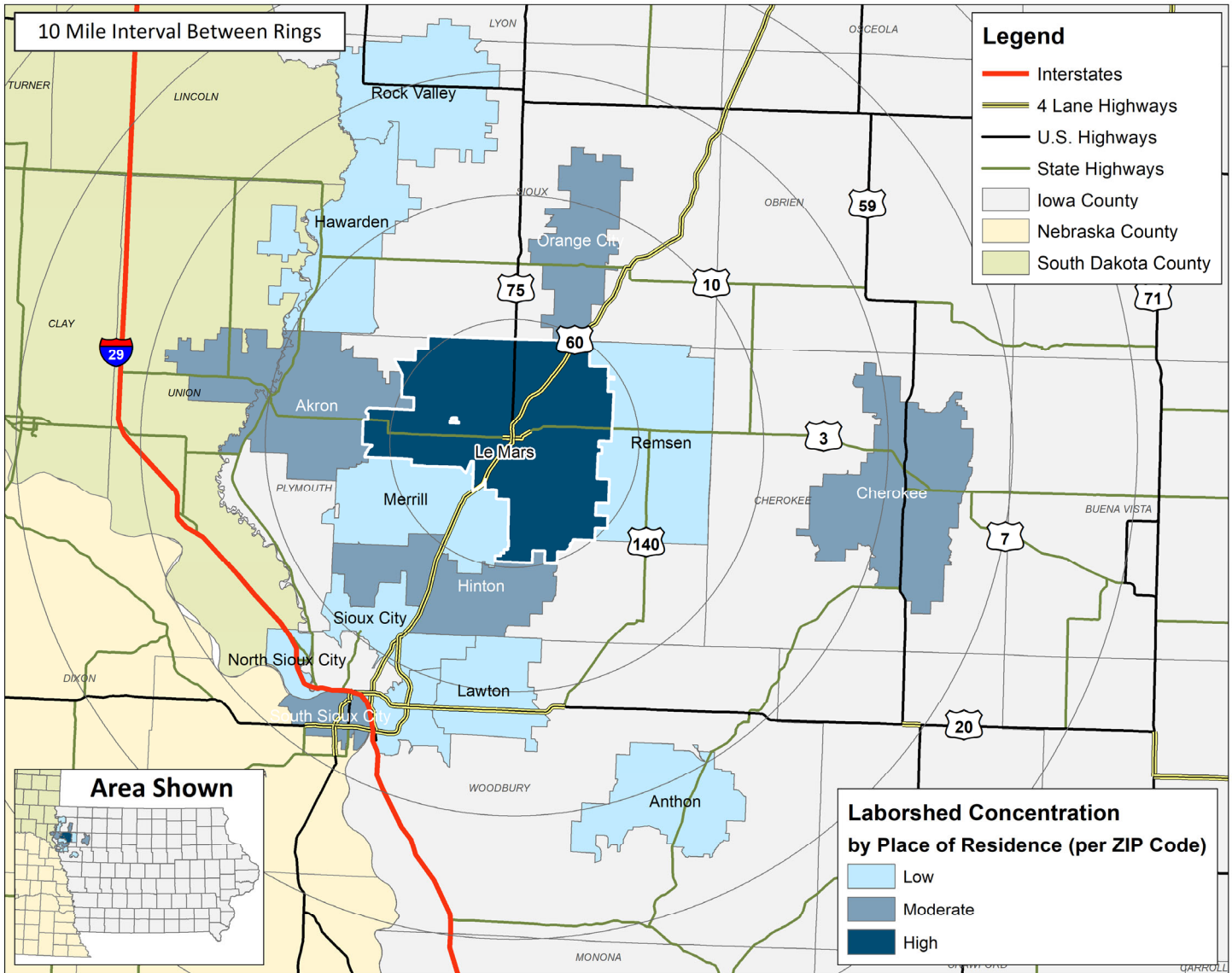
LABOR CHARACTERISTICS

FINANCIAL SERVICES



LE MARS, IA LABORSHED AREA

CONCENTRATION OF RESPONDENTS WITHIN THE LABORSHED AREA WITH TRANSFERABLE EXPERIENCE/SKILLS BY PLACE OF RESIDENCE



Workers who have transferable experience/skills in the industry are currently commuting an average of 7 miles one way for work. Those who are likely to change/accept employment are willing to commute an average of 18 miles one way for the right employment opportunity.

FOR MORE INFORMATION REGARDING THE LE MARS, IA LABORSHED, CONTACT:

Le Mars Area Chamber of Commerce
50 Central Avenue SE
Le Mars IA, 51031

Phone: (712) 546-8821 | E-mail: info@lemarschamber.org
www.lemarsiowa.com

LABOR CHARACTERISTICS



FINANCIAL SERVICES

ESTIMATED AVAILABLE LABOR PER OCCUPATIONAL CATEGORY:

- Accountants & Auditors - 1,180
- Bill & Account Collectors - 295
- Billing & Posting Clerks - 297
- Bookkeeping, Accounting, & Auditing Clerks - 1,475
- Computer & Information Systems Managers - 295
- Customer Service Representatives - 590
- Financial Managers - 2,065
- Supervisors of Office & Administrative Support Workers - 2,360
- Insurance Claims and Policy Processing Clerks - 295
- Insurance Sales Agents - 590
- Insurance Underwriters - 296
- Loan Officers - 293
- Personal Financial Advisors - 294
- Telemarketers - 295
- Tellers - 294



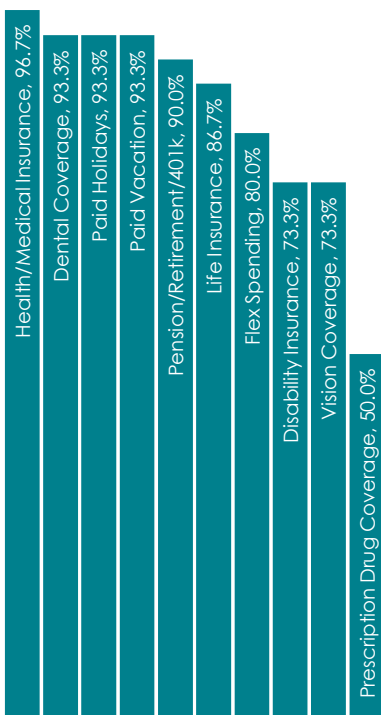
AN ESTIMATED TOTAL OF **10,914** PEOPLE IN THE LABORSHED AREA

UNDEREMPLOYMENT (ESTIMATED):

- Low hours - 0.0%
- Low income - 2.7% (77)
- Mismatch of skills - 10.8% (309)
- Total - 10.8% (309)

(Individuals counted only once when estimating Total Underemployment.)

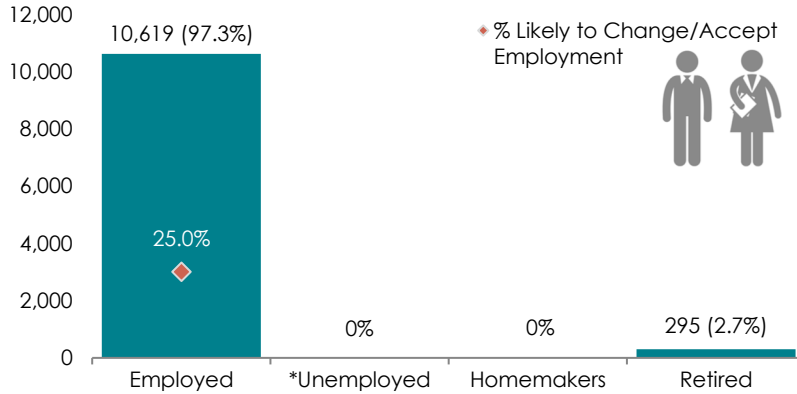
CURRENT BENEFITS:



DESIRED BENEFITS:



ESTIMATED TOTAL BY EMPLOYMENT STATUS (PERCENTAGE):



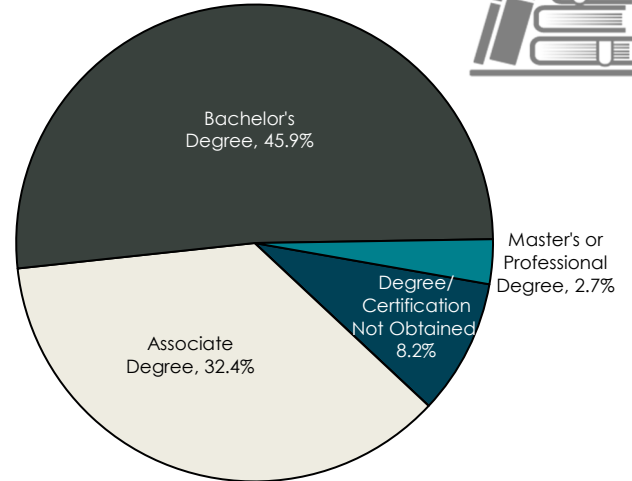
**Employment status is self-identified by the survey respondent. The unemployment percentage does not reflect the unemployment rate published by the U.S. Bureau of Labor Statistics, which applies a stricter definition.*

EMPLOYMENT STATS:

- 48.6% paid an hourly wage
- 97.3% are/were employed full-time
- 2.7% are/were employed part-time
- 19.4% are/were self-employed
- 11.1% hold two or more jobs
- Currently working an average of 42 hours/week

EDUCATIONAL LEVEL:

(89.2% HAVE AN EDUCATION BEYOND HIGH SCHOOL)



TOP JOB SEARCH RESOURCES:

(For those seeking employment opportunities, by use.)

- Internet - 86.5%
 - www.indeed.com
 - www.linkedin.com
 - www.facebook.com
- Networking through friends, family or acquaintances - 54.1%
- IowaWORKS Centers - 29.7%
- Newspapers - 27.0%
 - *Le Mars Daily Sentinel*
 - *Sioux City Journal*



LABOR CHARACTERISTICS



FINANCIAL SERVICES

OCCUPATION	OCCUPATIONAL CODE	MEAN WAGE	ENTRY WAGE	EXPERIENCED WAGE	MEDIAN WAGE	MEAN ANNUAL SALARY
Accountants and Auditors	13-2011	\$30.76	\$21.65	\$35.32	\$28.98	\$63,983
Bill and Account Collectors	43-3011	\$17.33	\$12.13	\$19.94	\$16.86	\$36,055
Billing and Posting Clerks	43-3021	\$19.18	\$15.45	\$21.05	\$18.50	\$39,901
Bookkeeping, Accounting, and Auditing Clerks	43-3031	\$20.20	\$14.52	\$23.04	\$19.52	\$42,014
Claims Adjusters, Examiners, and Investigators	13-1031	\$31.08	\$20.19	\$36.53	\$31.85	\$64,656
Compliance Officers	13-1041	\$30.53	\$22.94	\$34.32	\$30.03	\$63,492
Credit Counselors	13-2071	\$18.32	\$14.70	\$20.13	\$17.65	\$38,102
Customer Service Representatives	43-4051	\$17.07	\$12.76	\$19.22	\$16.13	\$35,507
Financial Examiners	13-2061	\$41.99	\$24.50	\$50.74	\$35.20	\$87,341
First-Line Supervisors of Non-Retail Sales Workers	41-1012	\$52.58	\$29.64	\$64.04	\$38.42	\$109,357
First-Line Supervisors of Office and Administrative Support Workers	43-1011	\$28.07	\$17.85	\$33.18	\$25.20	\$58,382
Insurance Claims and Policy Processing Clerks	43-9041	\$17.77	\$15.15	\$19.08	\$17.60	\$36,959
Insurance Sales Agents	41-3021	\$29.85	\$16.50	\$36.53	\$21.24	\$62,094
Loan Interviewers and Clerks	43-4131	\$19.83	\$16.24	\$21.63	\$19.49	\$41,251
Loan Officers	13-2072	\$36.64	\$22.98	\$43.48	\$33.19	\$76,219
New Accounts Clerks	43-4141	\$17.82	\$16.04	\$18.71	\$17.77	\$37,069
Personal Financial Advisors	13-2052	\$42.71	\$22.98	\$52.58	\$34.54	\$88,841
Securities, Commodities, and Financial Services Sales Agents	41-3031	\$30.58	\$17.52	\$37.11	\$23.62	\$63,608
Statisticians	15-2041	\$23.30	\$17.13	\$26.38	\$18.61	\$48,463
Tellers	43-3071	\$15.30	\$12.98	\$16.47	\$14.73	\$31,834

The 2021 Iowa Wage data for the Le Mars, IA Laborshed area was produced by the Labor Force & Occupational Analysis Bureau to provide communities local information on wages by occupation. The source of the wage and employment data is based on the May 2020 OES estimates. Additional occupational wage and employment data can be found at www.iowalmi.gov/laborshed.

