

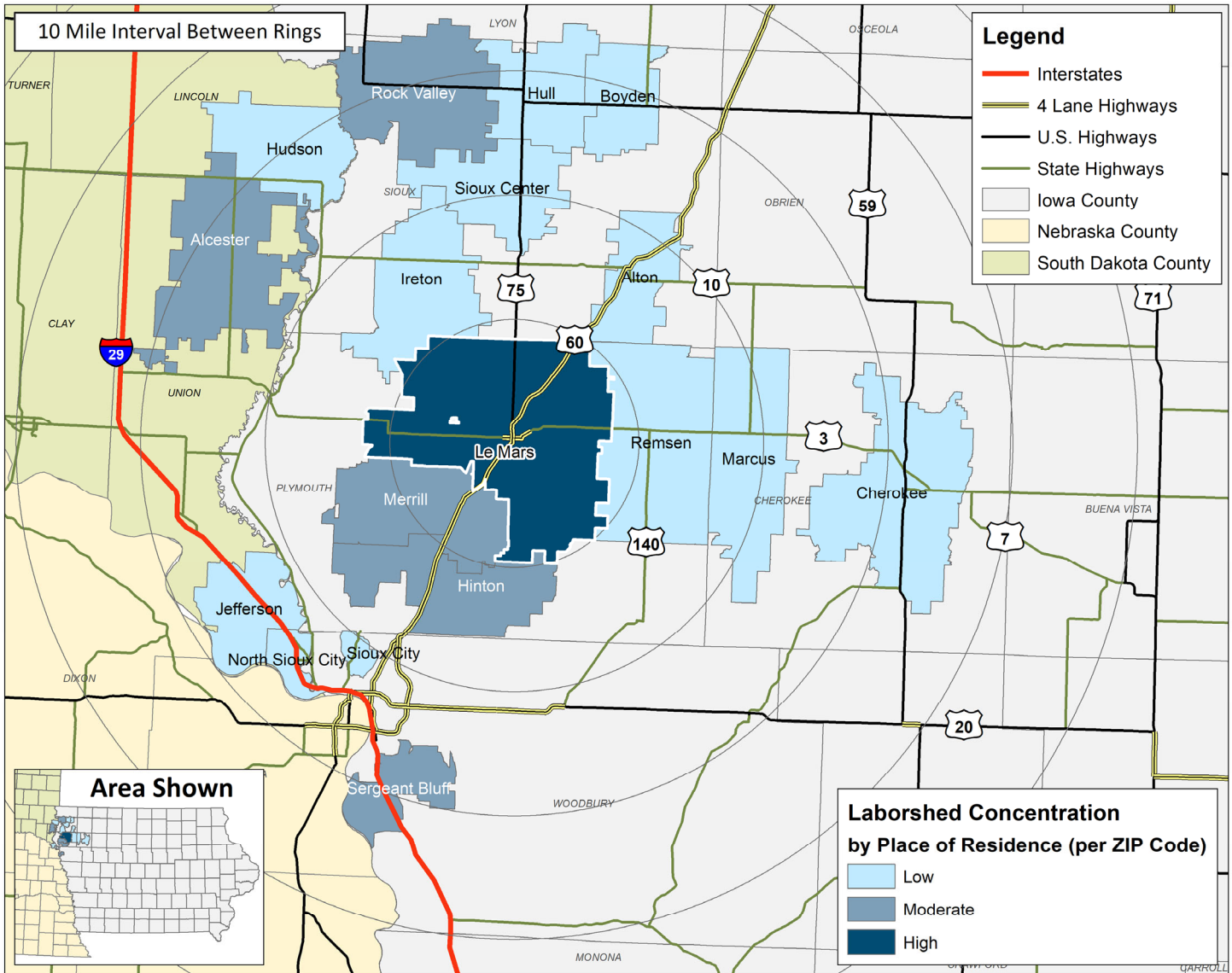
LABOR CHARACTERISTICS

BIOTECHNOLOGY



LE MARS, IA LABORSHED AREA

**CONCENTRATION OF RESPONDENTS WITHIN THE LABORSHED AREA
WITH TRANSFERABLE EXPERIENCE/SKILLS BY PLACE OF RESIDENCE**



Workers who have transferable experience/skills in the industry are currently commuting an average of 8 miles one way for work. Those who are likely to change/accept employment are willing to commute an average of 21 miles one way for the right employment opportunity.

FOR MORE INFORMATION REGARDING THE LE MARS, IA LABORSHED, CONTACT:

Le Mars Area Chamber of Commerce
50 Central Avenue SE
Le Mars IA, 51031

Phone: (712) 546-8821 | E-mail: info@lemarschamber.org
www.lemarsiowa.com

LABOR CHARACTERISTICS

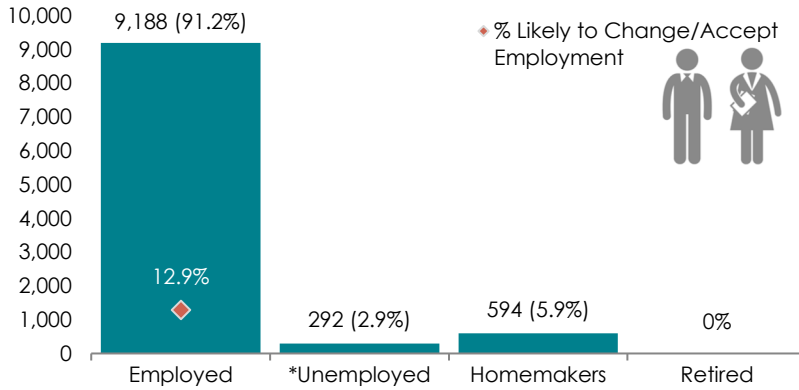


BIOTECHNOLOGY

ESTIMATED AVAILABLE LABOR PER OCCUPATIONAL CATEGORY:

- Chemical Technicians - 297
- Cooling & Freezing Equipment Operators & Tenders - 296
- Dietetic Technicians - 296
- Engineers, All Other - 1,185
- Farmers, Ranchers, & Other Agricultural Managers - 4,741
- Farmworkers & Laborers, Crop, Nursery, & Greenhouse - 296
- Farmworkers, Farm, Ranch, & Aquacultural Animals - 296
- Industrial Production Managers - 889
- Inspectors, Testers, Sorters, Samplers, & Weighers - 296
- Life, Physical, & Social Science Technicians, All Other - 296
- Medical & Clinical Laboratory Technologists - 296
- Supervisors of Farming, Fishing, & Forestry Workers - 297
- Supervisors of Production & Operating Workers - 593

ESTIMATED TOTAL BY EMPLOYMENT STATUS (PERCENTAGE):



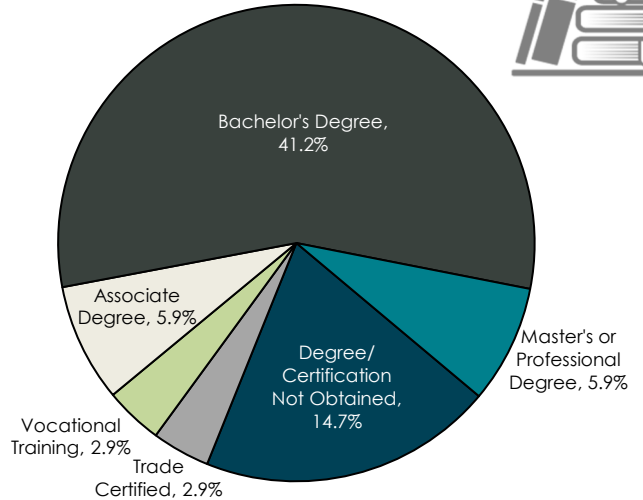
*Employment status is self-identified by the survey respondent. The unemployment percentage does not reflect the unemployment rate published by the U.S. Bureau of Labor Statistics, which applies a stricter definition.

EMPLOYMENT STATS:

- 50.0% paid an annual salary
- 94.1% are/were employed full-time
- 5.9% are/were employed part-time
- 58.1% are/were self-employed
- 9.7% hold two or more jobs
- Currently working an average of 50 hours/week

EDUCATIONAL LEVEL:

(73.5% HAVE AN EDUCATION BEYOND HIGH SCHOOL)



AN ESTIMATED TOTAL OF **10,074** PEOPLE IN THE LABORSHED AREA

UNDEREMPLOYMENT (ESTIMATED):

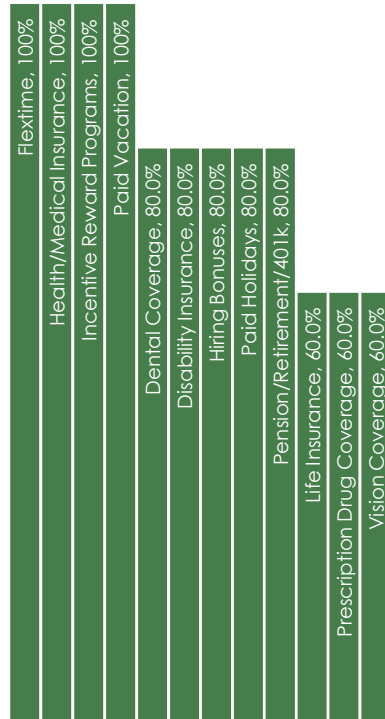
- Low hours - 0.0%
- Low income - 0.0%
- Mismatch of skills - 2.9% (77)
- Total - 2.9% (77)

(Individuals counted only once when estimating Total Underemployment.)

CURRENT BENEFITS:



DESIRED BENEFITS:



TOP JOB SEARCH RESOURCES:

(For those seeking employment opportunities, by use.)

- Networking through friends, family or acquaintances - 70.6%
 - www.indeed.com
 - www.linkedin.com
 - www.monster.com
- Internet - 55.9%
- Newspapers - 35.3%
 - *Sioux City Journal*
- Private Employment Services - 26.5%



LABOR CHARACTERISTICS



BIOTECHNOLOGY

OCCUPATION	OCCUPATIONAL CODE	MEAN WAGE	ENTRY WAGE	EXPERIENCED WAGE	MEDIAN WAGE	MEAN ANNUAL SALARY
Agricultural Inspectors	45-2011	\$24.92	\$18.20	\$28.29	\$25.64	\$51,841
Chemical Technicians	19-4031	\$23.11	\$19.30	\$25.02	\$22.62	\$48,071
Conservation Scientists	19-1031	\$28.57	\$23.69	\$31.00	\$28.58	\$59,418
Dietetic Technicians	29-2051	\$12.47	\$9.54	\$13.93	\$12.71	\$25,929
Dietitians and Nutritionists	29-1031	\$25.86	\$19.86	\$28.86	\$26.16	\$53,782
Engineers, All Other	17-2199	\$46.87	\$42.96	\$48.82	\$47.27	\$97,484
Environmental Scientists and Specialists, Including Health	19-2041	\$32.06	\$27.46	\$34.36	\$30.08	\$66,680
Farmworkers, Farm, Ranch, and Aquacultural Animals	45-2093	\$16.62	\$11.39	\$19.23	\$17.17	\$34,561
First-Line Supervisors of Farming, Fishing, and Forestry Workers	45-1011	\$35.08	\$23.88	\$40.69	\$30.87	\$72,973
First-Line Supervisors of Production and Operating Workers	51-1011	\$30.26	\$22.17	\$34.30	\$28.79	\$62,943
Industrial Engineers	17-2112	\$44.31	\$32.35	\$50.29	\$41.39	\$92,170
Inspectors, Testers, Sorters, Samplers, and Weighers	51-9061	\$19.68	\$14.69	\$22.17	\$18.10	\$40,927
Life, Physical, and Social Science Technicians, All Other	19-4099	\$18.31	\$13.81	\$20.56	\$15.13	\$38,080
Separating, Filtering, Clarifying, Precipitating, and Still Machine Setters, Operators, and Tenders	51-9012	\$22.97	\$19.66	\$24.62	\$22.78	\$47,775
Soil and Plant Scientists	19-1013	\$28.85	\$23.32	\$31.61	\$28.03	\$60,001
Veterinary Technologists and Technicians	29-2056	\$15.29	\$13.60	\$16.14	\$14.81	\$31,811
Water and Wastewater Treatment Plant and System Operators	51-8031	\$24.44	\$19.16	\$27.07	\$23.85	\$50,828

The 2021 Iowa Wage data for the Le Mars, IA Laborshed area was produced by the Labor Force & Occupational Analysis Bureau to provide communities local information on wages by occupation. The source of the wage and employment data is based on the May 2020 OES estimates. Additional occupational wage and employment data can be found at www.iowalmi.gov/laborshed.

