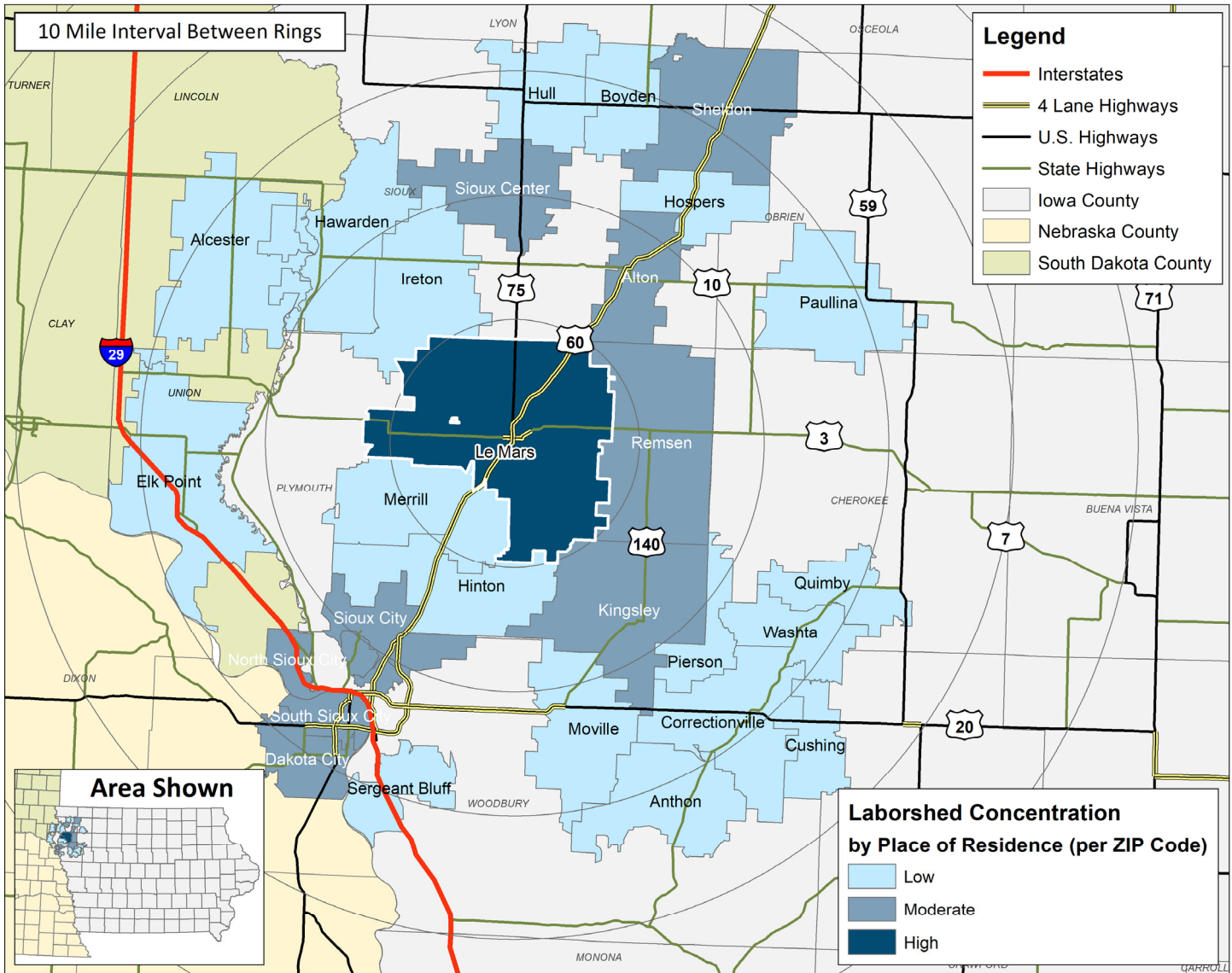


LABOR CHARACTERISTICS

ADVANCED MANUFACTURING

LE MARS, IA LABORSHED AREA

CONCENTRATION OF RESPONDENTS WITHIN THE LABORSHED AREA
WITH TRANSFERABLE EXPERIENCE/SKILLS BY PLACE OF RESIDENCE



Workers who have transferable experience/skills in the industry are currently commuting an average of 13 miles one way for work. Those who are likely to change/accept employment are willing to commute an average of 27 miles one way for the right employment opportunity.

FOR MORE INFORMATION REGARDING THE LE MARS, IA LABORSHED, CONTACT:

Le Mars Area Chamber of Commerce
50 Central Avenue SE
Le Mars IA, 51031
Phone: (712) 546-8821 | E-mail: info@lemarschamber.org
www.lemarsiowa.com

LABOR CHARACTERISTICS



ADVANCED MANUFACTURING

ESTIMATED AVAILABLE LABOR PER OCCUPATIONAL CATEGORY:

- Assemblers & Fabricators, All Other - 295
- Bus and Truck Mechanics & Diesel Engine Specialists - 293
- Cooling & Freezing Equipment Operators - 294
- Crushing, Grinding, & Polishing Machine Operators - 295
- Cutting & Slicing Machine Operators - 296
- Electrical Engineers - 296
- Electricians - 297
- Engineers, All Other - 1,185
- Heavy & Tractor-Trailer Truck Drivers - 3,556
- Industrial Machinery Mechanics - 296
- Industrial Production Managers - 889
- Inspectors, Testers, Sorters, Samplers, & Weighers - 296
- Installation, Maintenance, & Repair Workers - 889
- Laborers & Freight, Stock, & Material Movers - 2,074
- Light Truck or Delivery Services Drivers - 593
- Mechanical Engineering Technicians - 297
- Molders, Shapers, & Casters, Except Metal & Plastic - 299
- Molding, Coremaking, & Casting Machine Setters, Operators, & Tenders, Metal & Plastic - 298
- Multiple Machine Tool Setters, Operators, & Tenders, Metal & Plastic - 298
- Packaging & Filling Machine Operators & Tenders - 296
- Production Workers, All Other - 2,074
- Supervisors of Mechanics, Installers, & Repairers - 1,778
- Supervisors of Production & Operating Workers - 593
- Team Assemblers - 593
- Welders, Cutters, Solderers, & Brazers - 1,185

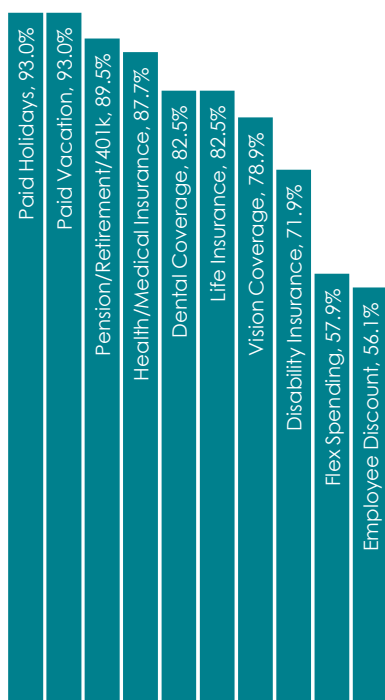
AN ESTIMATED TOTAL OF **20,148** PEOPLE IN THE LABORSHED AREA

UNDEREMPLOYMENT (ESTIMATED):

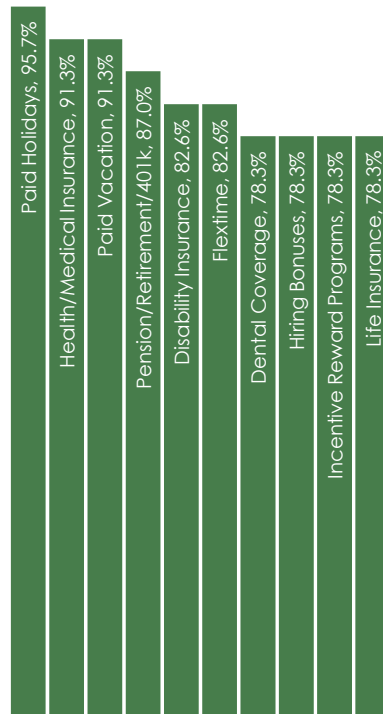
- Low hours - 1.5% (79)
- Low income - 1.5% (79)
- Mismatch of skills - 2.9% (153)
- Total - 5.9% (311)

(Individuals counted only once when estimating Total Underemployment.)

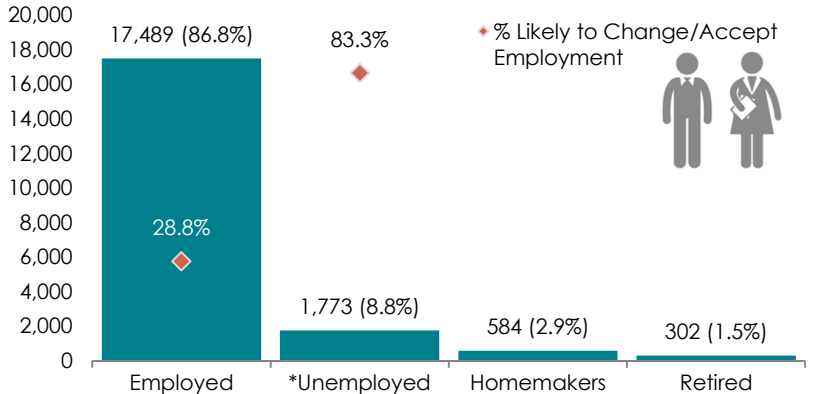
CURRENT BENEFITS:



DESIRED BENEFITS:



ESTIMATED TOTAL BY EMPLOYMENT STATUS (PERCENTAGE):



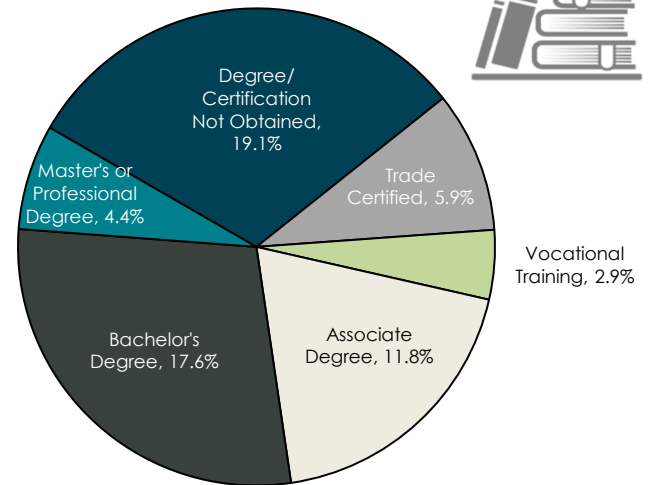
**Employment status is self-identified by the survey respondent. The unemployment percentage does not reflect the unemployment rate published by the U.S. Bureau of Labor Statistics, which applies a stricter definition.*

EMPLOYMENT STATS:

- 63.2% paid an hourly wage
- 92.5% are/were employed full-time
- 7.5% are/were employed part-time
- 15.3% are/were self-employed
- 16.9% hold two or more jobs
- Currently working an average of 48 hours/week

EDUCATIONAL LEVEL:

(61.7% HAVE AN EDUCATION BEYOND HIGH SCHOOL)



TOP JOB SEARCH RESOURCES:

(For those seeking employment opportunities, by use.)

- Internet - 76.1%
 - www.indeed.com
 - www.linkedin.com
 - www.facebook.com
- Networking through friends, family or acquaintances - 50.7%
- IowaWORKS Centers - 28.4%
- Newspapers - 23.9%
 - *Sioux City Journal*
 - *Le Mars Daily Sentinel*



LABOR CHARACTERISTICS



ADVANCED MANUFACTURING

OCCUPATION	OCCUPATIONAL CODE	MEAN WAGE	ENTRY WAGE	EXPERIENCED WAGE	MEDIAN WAGE	MEAN ANNUAL SALARY
Bus and Truck Mechanics and Diesel Engine Specialists	49-3031	\$21.73	\$16.08	\$24.56	\$21.72	\$45,202
Cleaning, Washing, and Metal Pickling Equipment Operators and Tenders	51-9192	\$16.25	\$11.20	\$18.78	\$14.24	\$33,805
Conveyor Operators and Tenders	53-7011	\$18.77	\$15.78	\$20.27	\$18.74	\$39,046
Crushing, Grinding, and Polishing Machine Setters, Operators, and Tenders	51-9021	\$19.31	\$16.92	\$20.50	\$18.94	\$40,161
Cutting, Punching, and Press Machine Setters, Operators, and Tenders, Metal and Plastic	51-4031	\$18.03	\$14.36	\$19.87	\$17.66	\$37,506
Electrical and Electronic Engineering Technicians	17-3023	\$36.25	\$26.73	\$41.01	\$36.90	\$75,406
Electrical and Electronics Repairers, Commercial and Industrial Equipment	49-2094	\$27.83	\$20.81	\$31.33	\$26.76	\$57,878
Electricians	47-2111	\$23.71	\$15.09	\$28.02	\$22.67	\$49,313
Engineers, All Other	17-2199	\$46.87	\$42.96	\$48.82	\$47.27	\$97,484
First-Line Supervisors of Mechanics, Installers, and Repairers	49-1011	\$34.57	\$23.04	\$40.33	\$34.71	\$71,905
First-Line Supervisors of Production and Operating Workers	51-1011	\$30.26	\$22.17	\$34.30	\$28.79	\$62,943
Grinding, Lapping, Polishing, and Buffing Machine Tool Setters, Operators, and Tenders, Metal and Plastic	51-4033	\$15.52	\$10.28	\$18.13	\$16.48	\$32,272
Heavy and Tractor-Trailer Truck Drivers	53-3032	\$19.51	\$12.20	\$23.17	\$19.97	\$40,586
Helpers--Production Workers	51-9198	\$18.30	\$13.21	\$20.84	\$17.33	\$38,055
Industrial Engineering Technicians	17-3026	\$24.50	\$22.13	\$25.68	\$24.04	\$50,951
Industrial Engineers	17-2112	\$44.31	\$32.35	\$50.29	\$41.39	\$92,170
Industrial Machinery Mechanics	49-9041	\$26.26	\$20.92	\$28.94	\$26.76	\$54,630
Industrial Truck and Tractor Operators	53-7051	\$18.70	\$14.57	\$20.76	\$18.44	\$38,890
Inspectors, Testers, Sorters, Samplers, and Weighers	51-9061	\$19.68	\$14.69	\$22.17	\$18.10	\$40,927
Installation, Maintenance, and Repair Workers, All Other	49-9099	\$21.56	\$17.37	\$23.66	\$20.67	\$44,854
Laborers and Freight, Stock, and Material Movers, Hand	53-7062	\$16.25	\$11.93	\$18.42	\$16.50	\$33,809
Light Truck or Delivery Services Drivers	53-3033	\$17.15	\$10.93	\$20.26	\$16.18	\$35,671
Machine Feeders and Offbearers	53-7063	\$17.75	\$16.55	\$18.35	\$17.74	\$36,925
Machinists	51-4041	\$19.99	\$16.15	\$21.92	\$19.67	\$41,588
Maintenance and Repair Workers, General	49-9071	\$19.31	\$13.60	\$22.16	\$19.69	\$40,157
Maintenance Workers, Machinery	49-9043	\$26.64	\$20.01	\$29.95	\$26.79	\$55,405
Mechanical Drafters	17-3013	\$24.39	\$18.02	\$27.58	\$23.42	\$50,741
Mechanical Engineering Technicians	17-3027	\$22.57	\$17.94	\$24.88	\$21.98	\$46,943
Mechanical Engineers	17-2141	\$34.66	\$24.69	\$39.65	\$35.20	\$72,098
Mixing and Blending Machine Setters, Operators, and Tenders	51-9023	\$19.47	\$14.64	\$21.88	\$18.38	\$40,493
Molders, Shapers, and Casters, Except Metal and Plastic	51-9195	\$15.00	\$13.91	\$15.54	\$14.64	\$31,193
Molding, Coremaking, and Casting Machine Setters, Operators, and Tenders, Metal and Plastic	51-4072	\$14.10	\$11.50	\$15.40	\$13.56	\$29,330
Multiple Machine Tool Setters, Operators, and Tenders, Metal and Plastic	51-4081	\$20.31	\$16.92	\$22.01	\$20.57	\$42,250
Packaging and Filling Machine Operators and Tenders	51-9111	\$15.76	\$13.61	\$16.84	\$15.53	\$32,788
Packers and Packagers, Hand	53-7064	\$14.92	\$12.14	\$16.32	\$14.72	\$31,041
Production Workers, All Other	51-9199	\$15.15	\$11.25	\$17.10	\$14.49	\$31,508
Separating, Filtering, Clarifying, Precipitating, and Still Machine Setters, Operators, and Tenders	51-9012	\$22.97	\$19.66	\$24.62	\$22.78	\$47,775
Structural Metal Fabricators and Fitters	51-2041	\$18.92	\$15.16	\$20.79	\$18.37	\$39,343
Tool and Die Makers	51-4111	\$22.45	\$19.64	\$23.85	\$22.50	\$46,686
Water and Wastewater Treatment Plant and System Operators	51-8031	\$24.44	\$19.16	\$27.07	\$23.85	\$50,828
Welders, Cutters, Solderers, and Brazers	51-4121	\$20.60	\$16.14	\$22.83	\$20.34	\$42,852
Welding, Soldering, and Brazing Machine Setters, Operators, and Tenders	51-4122	\$18.71	\$16.62	\$19.76	\$18.40	\$38,919

The 2021 Iowa Wage data for the Le Mars, IA Laborshed area was produced by the Labor Force & Occupational Analysis Bureau to provide communities local information on wages by occupation. The source of the wage and employment data is based on the May 2020 OES estimates. Additional occupational wage and employment data can be found at www.iowalmi.gov/laborshed.