

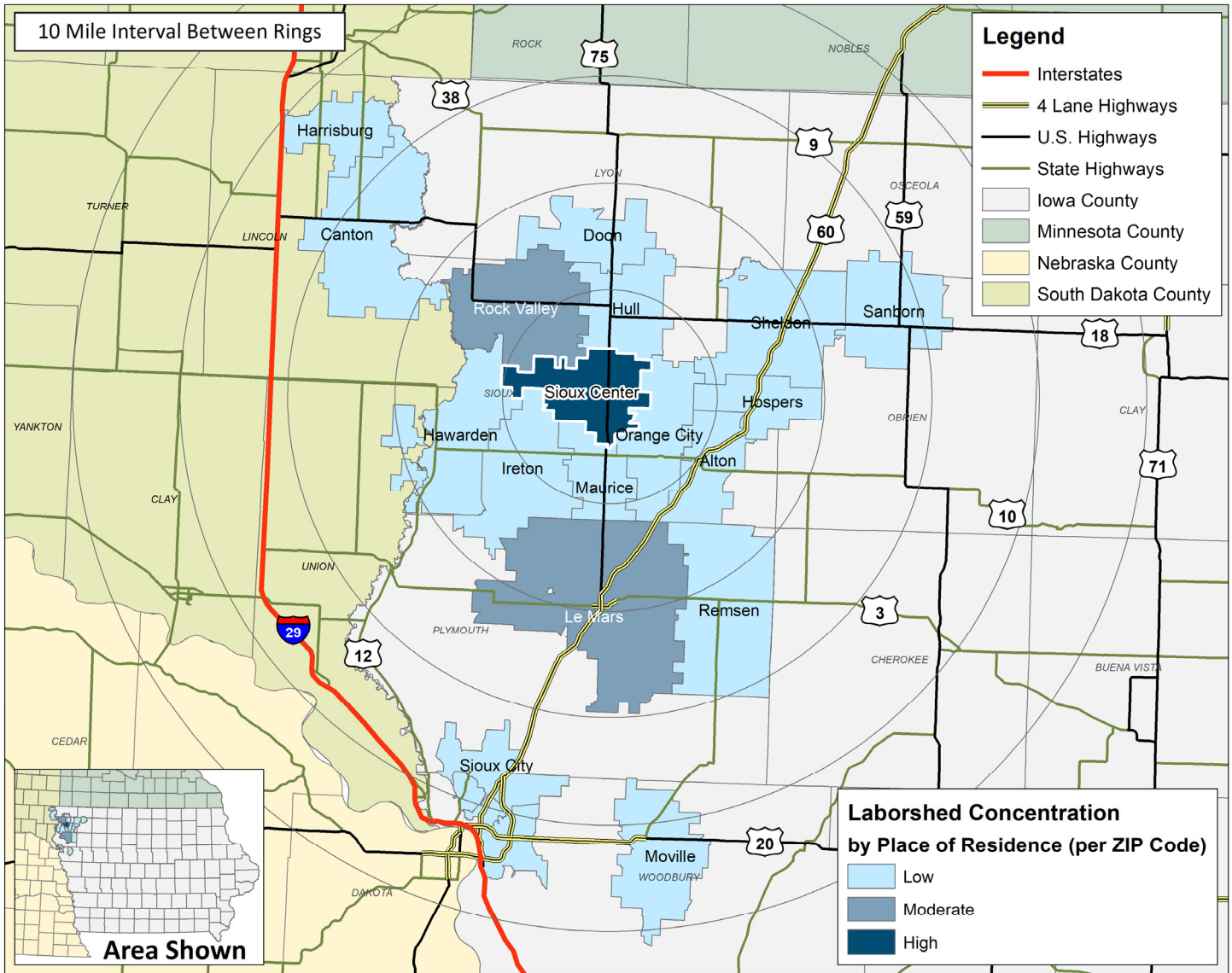
# LABOR CHARACTERISTICS



## WAREHOUSE & DISTRIBUTION

### SIOUX CENTER, IA LABORSHED AREA

CONCENTRATION OF RESPONDENTS WITHIN THE LABORSHED AREA WITH TRANSFERABLE EXPERIENCE/SKILLS BY PLACE OF RESIDENCE



Workers who have transferable experience/skills in the industry are currently commuting an average of 15 miles one way for work. Those who are likely to change/accept employment are willing to commute an average of 21 miles one way for the right employment opportunity.

FOR MORE INFORMATION REGARDING THE SIOUX CENTER, IA LABORSHED, CONTACT:

Sioux Center Economic Development  
335 1st Ave NW  
Sioux Center, IA 51250  
Phone: (712) 722-0761 | E-mail: [ddokter@siouxcenter.org](mailto:ddokter@siouxcenter.org)  
[www.siouxcenter.org](http://www.siouxcenter.org)

# LABOR CHARACTERISTICS



# WAREHOUSE & DISTRIBUTION

## ESTIMATED AVAILABLE LABOR PER OCCUPATIONAL CATEGORY:

- Automotive Body and Related Repairers - 294
- Automotive Service Technicians and Mechanics - 886
- Bus and Truck Mechanics and Diesel Engine Specialists - 592
- Cleaners of Vehicles and Equipment - 299
- Dispatchers, Except Police, Fire, and Ambulance - 292
- First-Line Supervisors of Mechanics, Installers, and Repairers - 1,476
- First-Line Supervisors of Production and Operating Workers - 1,477
- Heavy and Tractor-Trailer Truck Drivers - 2,363
- Inspectors, Testers, Sorters, Samplers, and Weighers - 297
- Installation, Maintenance, and Repair Workers, All Other - 295
- Laborers and Freight, Stock, and Material Movers, Hand - 1,478
- Light Truck or Delivery Services Drivers - 887
- Logisticians - 590
- Packers and Packagers, Hand - 593
- Production Workers, All Other - 1,182
- Production, Planning, and Expediting Clerks - 591
- Railroad Conductors and Yardmasters - 298
- Shipping, Receiving, and Traffic Clerks - 293
- Team Assemblers - 296
- Transportation, Storage, and Distribution Managers - 885

AN ESTIMATED TOTAL OF **15,364** PEOPLE IN THE LABORSHED AREA

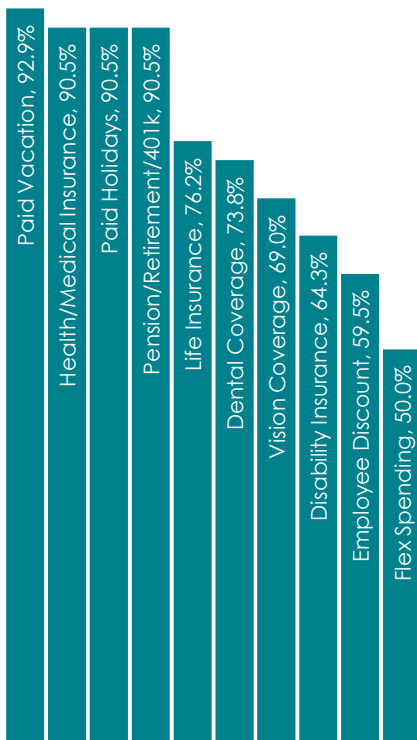
## UNDEREMPLOYMENT (ESTIMATED):

- Low hours - 1.9% (34)
- Low income - 1.9% (34)
- Mismatch of skills - 5.8% (104)
- Total - 9.6% (173)

*(Individuals counted only once when estimating Total Underemployment.)*



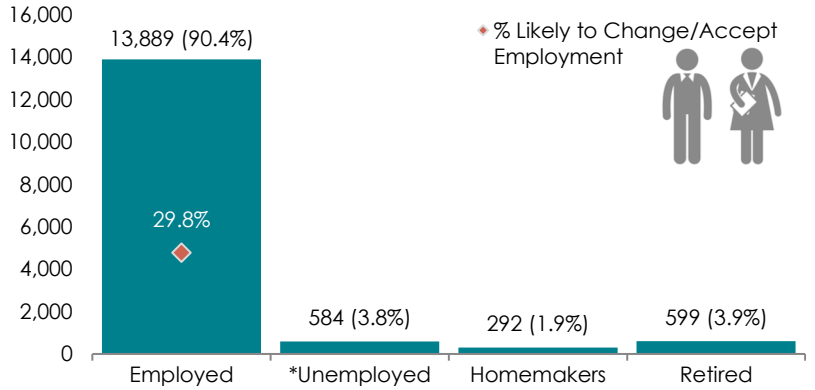
## CURRENT BENEFITS:



## DESIRED BENEFITS:



## ESTIMATED TOTAL BY EMPLOYMENT STATUS (PERCENTAGE):



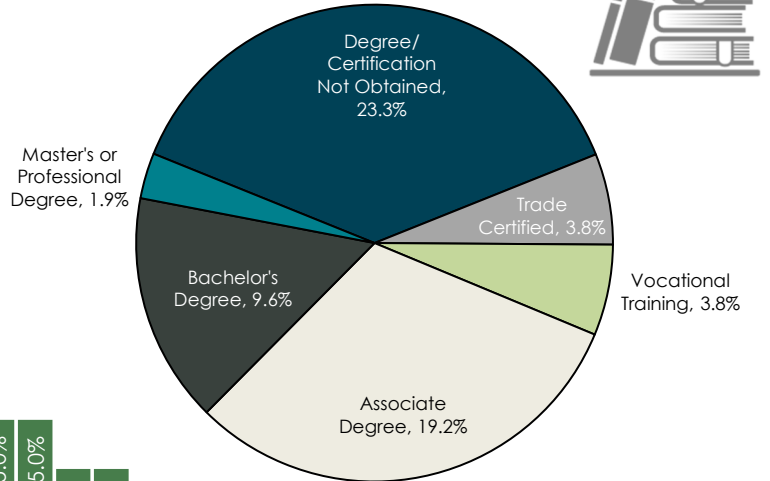
*\*Employment status is self-identified by the survey respondent. The unemployment percentage does not reflect the unemployment rate published by the U.S. Bureau of Labor Statistics, which applies a stricter definition.*

## EMPLOYMENT STATS:

- 65.4% paid an hourly wage
- 90.4% are/were employed full-time
- 9.6% are/were employed part-time
- 19.1% are/were self-employed
- 14.9% hold two or more jobs
- Currently working an average of 45 hours/week

## EDUCATIONAL LEVEL:

(61.6% HAVE AN EDUCATION BEYOND HIGH SCHOOL)



## TOP JOB SEARCH RESOURCES:

*(For those seeking employment opportunities, by use.)*

- Internet - 70.0%
  - [www.indeed.com](http://www.indeed.com)
  - [www.linkedin.com](http://www.linkedin.com)
  - [www.careerbuilder.com](http://www.careerbuilder.com)
  - [www.facebook.com](http://www.facebook.com)
- Networking through friends, family or acquaintances - 46.0%
- Newspapers - 26.0%
- IowaWORKS Centers - 20.0%



# LABOR CHARACTERISTICS



# WAREHOUSE & DISTRIBUTION

OCCUPATION	OCCUPATIONAL CODE	MEAN WAGE	ENTRY WAGE	EXPERIENCED WAGE	MEDIAN WAGE	MEAN ANNUAL SALARY
Aircraft Mechanics and Service Technicians	49-3011	\$28.98	\$20.43	\$33.25	\$26.21	\$60,268
Automotive Body and Related Repairers	49-3021	\$22.34	\$16.05	\$25.49	\$21.36	\$46,477
Automotive Service Technicians and Mechanics	49-3023	\$20.40	\$13.72	\$23.74	\$19.99	\$42,436
Bus and Truck Mechanics and Diesel Engine Specialists	49-3031	\$23.73	\$17.58	\$26.81	\$23.48	\$49,365
Cargo and Freight Agents	43-5011	\$24.65	\$18.26	\$27.85	\$23.89	\$51,279
Cleaners of Vehicles and Equipment	53-7061	\$13.08	\$9.91	\$14.67	\$13.03	\$27,212
Conveyor Operators and Tenders	53-7011	\$16.20	\$13.78	\$17.41	\$16.24	\$33,698
Dispatchers, Except Police, Fire, and Ambulance	43-5032	\$18.34	\$12.54	\$21.24	\$16.59	\$38,149
First-Line Supervisors of Mechanics, Installers, and Repairers	49-1011	\$32.06	\$18.84	\$38.66	\$32.85	\$66,676
First-Line Supervisors of Production and Operating Workers	51-1011	\$30.38	\$23.51	\$33.81	\$29.31	\$63,181
Heavy and Tractor-Trailer Truck Drivers	53-3032	\$21.16	\$14.37	\$24.55	\$21.34	\$44,009
Helpers--Production Workers	51-9198	\$18.20	\$13.22	\$20.69	\$17.21	\$37,850
Industrial Machinery Mechanics	49-9041	\$25.12	\$20.33	\$27.51	\$25.32	\$52,243
Industrial Truck and Tractor Operators	53-7051	\$18.37	\$14.18	\$20.47	\$17.98	\$38,218
Inspectors, Testers, Sorters, Samplers, and Weighers	51-9061	\$18.97	\$14.84	\$21.03	\$17.89	\$39,450
Installation, Maintenance, and Repair Workers, All Other	49-9099	\$22.08	\$16.65	\$24.79	\$21.47	\$45,923
Laborers and Freight, Stock, and Material Movers, Hand	53-7062	\$15.66	\$11.82	\$17.57	\$15.51	\$32,569
Light Truck or Delivery Services Drivers	53-3033	\$18.01	\$11.96	\$21.03	\$16.86	\$37,461
Logisticians	13-1081	\$29.98	\$20.03	\$34.95	\$27.94	\$62,353
Machine Feeders and Offbearers	53-7063	\$16.64	\$14.06	\$17.92	\$17.14	\$34,607
Maintenance and Repair Workers, General	49-9071	\$19.41	\$15.04	\$21.59	\$19.12	\$40,364
Motor Vehicle Operators, All Other	53-3099	\$17.53	\$10.78	\$20.91	\$20.09	\$36,472
Packers and Packagers, Hand	53-7064	\$13.99	\$11.11	\$15.43	\$13.39	\$29,101
Production Workers, All Other	51-9199	\$15.09	\$11.32	\$16.97	\$14.42	\$31,384
Production, Planning, and Expediting Clerks	43-5061	\$22.43	\$16.19	\$25.55	\$21.11	\$46,649
Shipping, Receiving, and Traffic Clerks	43-5071	\$17.39	\$12.85	\$19.67	\$17.03	\$36,179
Weighers, Measurers, Checkers, and Samplers, Recordkeeping	43-5111	\$17.60	\$16.42	\$18.19	\$17.75	\$36,612

The 2021 Iowa Wage data for the Sioux Center, IA Laborshed area was produced by the Labor Force & Occupational Analysis Bureau to provide communities local information on wages by occupation. The source of the wage and employment data is based on the May 2020 OES estimates. Additional occupational wage and employment data can be found at [www.iowalmi.gov/laborshed](http://www.iowalmi.gov/laborshed).