

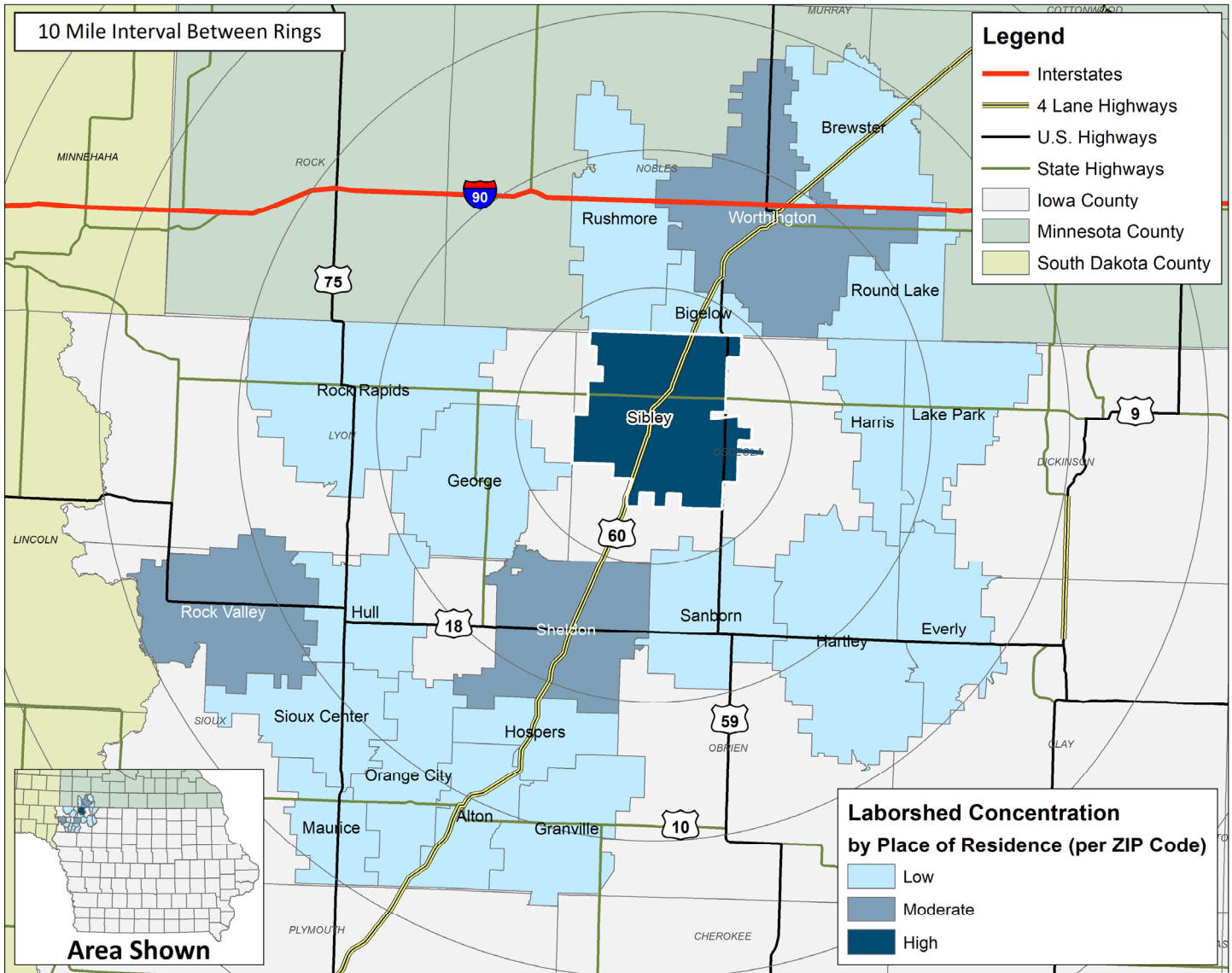
# LABOR CHARACTERISTICS



# WAREHOUSE & DISTRIBUTION

## SIBLEY, IA LABORSHED AREA

CONCENTRATION OF RESPONDENTS WITHIN THE LABORSHED AREA WITH TRANSFERABLE EXPERIENCE/SKILLS BY PLACE OF RESIDENCE



Workers who have transferable experience/skills in the industry are currently commuting an average of 13 miles one way for work. Those who are likely to change/accept employment are willing to commute an average of 21 miles one way for the right employment opportunity.

FOR MORE INFORMATION REGARDING THE SIBLEY, IA LABORSHED, CONTACT:

Osceola County Economic Development Commission  
300 7th Street  
Sibley, IA 51249

Phone: (712) 754-2523 | E-mail: [snepl@osceolacoia.org](mailto:snepl@osceolacoia.org)  
[www.osceolacountyia.gov](http://www.osceolacountyia.gov)

# LABOR CHARACTERISTICS

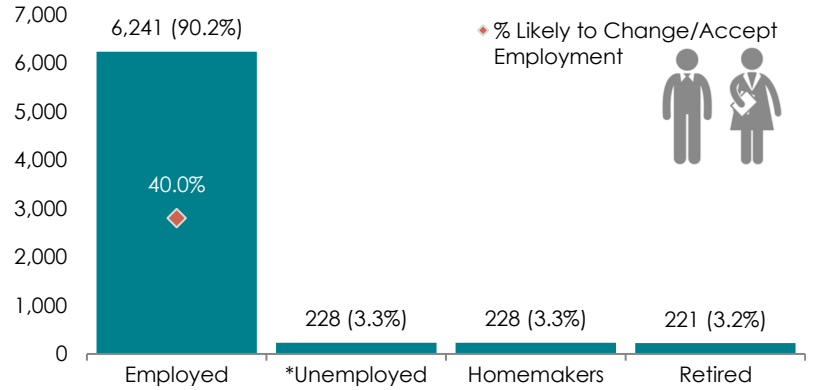


# WAREHOUSE & DISTRIBUTION

## ESTIMATED AVAILABLE LABOR PER OCCUPATIONAL CATEGORY:

- Automotive Body and Related Repairers - 113
- Automotive Service Technicians and Mechanics - 454
- Bus and Truck Mechanics and Diesel Engine Specialists - 114
- Cleaners of Vehicles and Equipment - 115
- Dispatchers, Except Police, Fire, and Ambulance - 227
- First-Line Supervisors of Mechanics, Installers, and Repairers - 1,020
- First-Line Supervisors of Production and Operating Workers - 680
- Heavy and Tractor-Trailer Truck Drivers - 1,135
- Installation, Maintenance, and Repair Workers, All Other - 339
- Laborers and Freight, Stock, and Material Movers, Hand - 341
- Light Truck or Delivery Services Drivers - 455
- Production Workers, All Other - 1,134
- Production, Planning, and Expediting Clerks - 228
- Shipping, Receiving, and Traffic Clerks - 112
- Team Assemblers - 340
- Transportation, Storage, and Distribution Managers - 111

## ESTIMATED TOTAL BY EMPLOYMENT STATUS (PERCENTAGE):



\*Employment status is self-identified by the survey respondent. The unemployment percentage does not reflect the unemployment rate published by the U.S. Bureau of Labor Statistics, which applies a stricter definition.

AN ESTIMATED TOTAL OF **6,918** PEOPLE IN THE LABORSHED AREA

## UNDEREMPLOYMENT (ESTIMATED):

- Low hours - 0.0%
- Low income - 1.6% (18)
- Mismatch of skills - 6.6% (74)
- Total - 8.2% (92)

(Individuals counted only once when estimating Total Underemployment.)

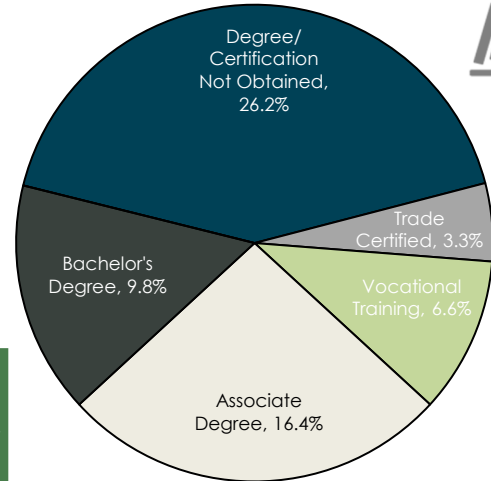


## EMPLOYMENT STATS:

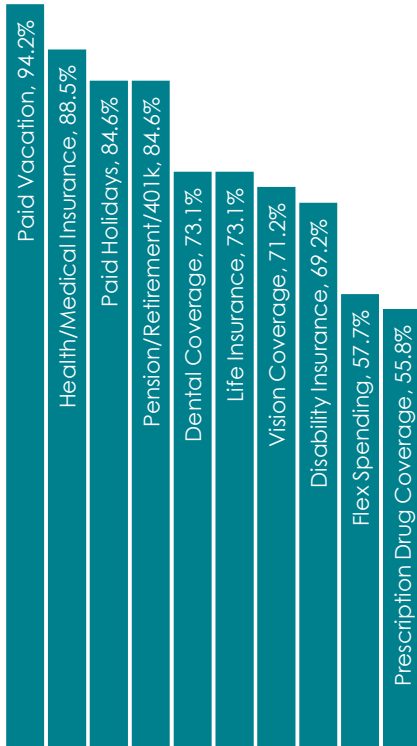
- 68.9% paid an hourly wage
- 88.5% are/were employed full-time
- 11.5% are/were employed part-time
- 16.4% are/were self-employed
- 20.0% hold two or more jobs
- Currently working an average of 45 hours/week

## EDUCATIONAL LEVEL:

(62.3% HAVE AN EDUCATION BEYOND HIGH SCHOOL)



## CURRENT BENEFITS:



## DESIRED BENEFITS:



## TOP JOB SEARCH RESOURCES:

(For those seeking employment opportunities, by use.)

- Internet - 63.9%
  - [www.indeed.com](http://www.indeed.com)
  - [www.facebook.com](http://www.facebook.com)
  - Company/organization websites
- Networking through friends, family or acquaintances - 50.8%
- Newspapers - 31.1%
- IowaWORKS Centers - 24.6%



# LABOR CHARACTERISTICS



## WAREHOUSE & DISTRIBUTION

OCCUPATION	OCCUPATIONAL CODE	MEAN WAGE	ENTRY WAGE	EXPERIENCED WAGE	MEDIAN WAGE	MEAN ANNUAL SALARY
Aircraft Mechanics and Service Technicians	49-3011	\$38.10	\$25.50	\$44.39	\$32.71	\$79,242
Automotive Service Technicians and Mechanics	49-3023	\$18.81	\$13.70	\$21.36	\$19.72	\$39,123
Bus and Truck Mechanics and Diesel Engine Specialists	49-3031	\$23.86	\$19.73	\$25.92	\$23.42	\$49,619
Cleaners of Vehicles and Equipment	53-7061	\$14.52	\$9.43	\$17.06	\$14.27	\$30,202
First-Line Supervisors of Mechanics, Installers, and Repairers	49-1011	\$25.20	\$17.53	\$29.04	\$19.53	\$52,421
First-Line Supervisors of Production and Operating Workers	51-1011	\$28.99	\$20.60	\$33.19	\$28.30	\$60,305
Heavy and Tractor-Trailer Truck Drivers	53-3032	\$20.43	\$13.38	\$23.96	\$20.05	\$42,495
Helpers--Installation, Maintenance, and Repair Workers	49-9098	\$16.21	\$13.84	\$17.40	\$15.66	\$33,723
Helpers--Production Workers	51-9198	\$17.52	\$13.92	\$19.31	\$17.54	\$36,435
Industrial Machinery Mechanics	49-9041	\$22.95	\$18.24	\$25.30	\$22.93	\$47,729
Industrial Truck and Tractor Operators	53-7051	\$17.94	\$14.11	\$19.85	\$17.54	\$37,309
Inspectors, Testers, Sorters, Samplers, and Weighers	51-9061	\$19.18	\$15.81	\$20.86	\$18.54	\$39,895
Installation, Maintenance, and Repair Workers, All Other	49-9099	\$21.44	\$17.19	\$23.56	\$21.01	\$44,595
Laborers and Freight, Stock, and Material Movers, Hand	53-7062	\$17.33	\$12.20	\$19.90	\$17.38	\$36,047
Light Truck or Delivery Services Drivers	53-3033	\$16.84	\$11.70	\$19.40	\$17.10	\$35,020
Maintenance and Repair Workers, General	49-9071	\$18.45	\$12.85	\$21.26	\$17.97	\$38,383
Packers and Packagers, Hand	53-7064	\$15.55	\$12.82	\$16.92	\$15.22	\$32,353
Production, Planning, and Expediting Clerks	43-5061	\$20.98	\$16.58	\$23.18	\$20.55	\$43,635
Shipping, Receiving, and Traffic Clerks	43-5071	\$16.96	\$13.48	\$18.69	\$16.68	\$35,267

The 2021 Iowa Wage data for the Sibley, IA Laborshed area was produced by the Labor Force & Occupational Analysis Bureau to provide communities local information on wages by occupation. The source of the wage and employment data is based on the May 2020 OES estimates. Additional occupational wage and employment data can be found at [www.iowalmi.gov/laborshed](http://www.iowalmi.gov/laborshed).

