

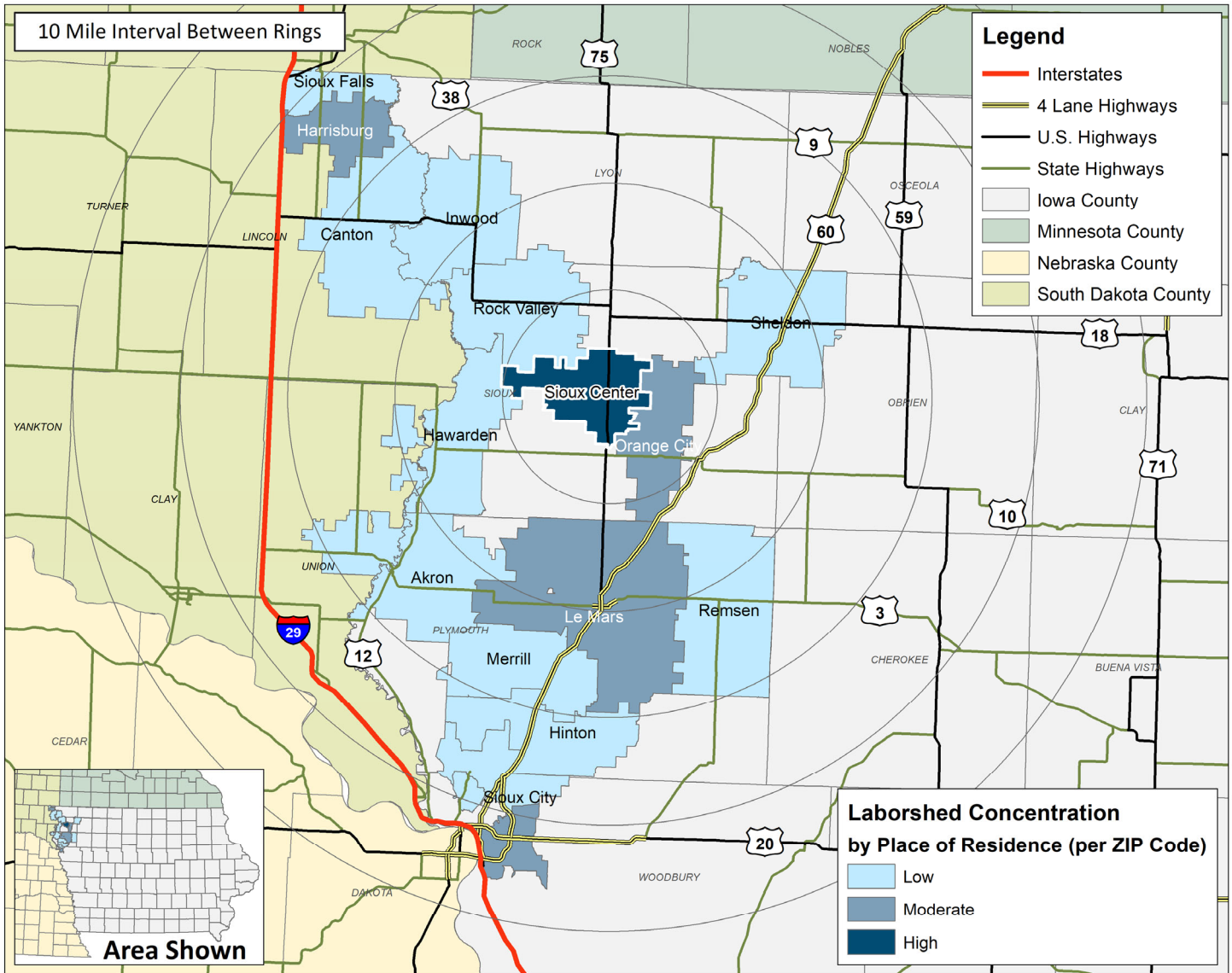
LABOR CHARACTERISTICS

FINANCIAL SERVICES



SIOUX CENTER, IA LABORSHED AREA

CONCENTRATION OF RESPONDENTS WITHIN THE LABORSHED AREA WITH TRANSFERABLE EXPERIENCE/SKILLS BY PLACE OF RESIDENCE



Workers who have transferable experience/skills in the industry are currently commuting an average of 12 miles one way for work. Those who are likely to change/accept employment are willing to commute an average of 16 miles one way for the right employment opportunity.

FOR MORE INFORMATION REGARDING THE SIOUX CENTER, IA LABORSHED, CONTACT:

Sioux Center Economic Development
335 1st Ave NW
Sioux Center, IA 51250
Phone: (712) 722-0761 | E-mail: ddokter@siouxcenter.org
www.siouxcenter.org

LABOR CHARACTERISTICS



FINANCIAL SERVICES

ESTIMATED AVAILABLE LABOR PER OCCUPATIONAL CATEGORY:

- Accountants and Auditors - 2,068
- Bill and Account Collectors - 592
- Bookkeeping, Accounting, and Auditing Clerks - 1,773
- Claims Adjusters, Examiners, and Investigators - 293
- Computer and Information Systems Managers - 292
- Customer Service Representatives - 886
- Financial Managers - 885
- Financial Specialists, All Other - 296
- First-Line Supervisors of Non-Retail Sales Workers - 297
- First-Line Supervisors of Office and Administrative Support Workers - 2,364
- Insurance Claims and Policy Processing Clerks - 299
- Insurance Sales Agents - 591
- Insurance Underwriters - 294
- Loan Officers - 295
- Telemarketers - 298

AN ESTIMATED TOTAL OF **11,523** PEOPLE IN THE LABORSHED AREA

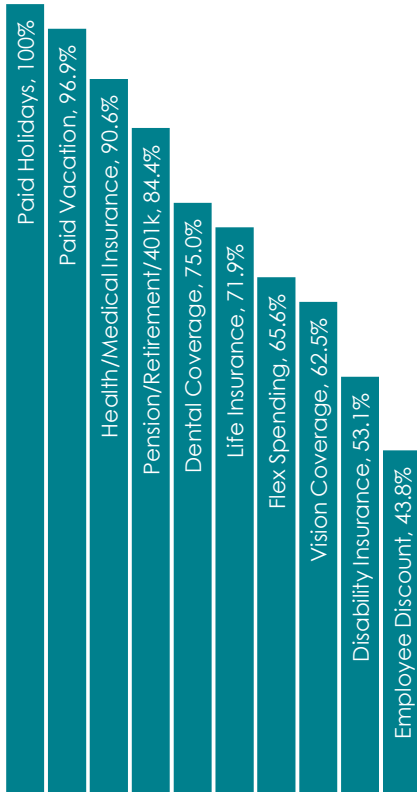
UNDEREMPLOYMENT (ESTIMATED):

- Low hours - 0.0%
- Low income - 2.6% (35)
- Mismatch of skills - 10.3% (139)
- Total - 10.3% (139)

(Individuals counted only once when estimating Total Underemployment.)



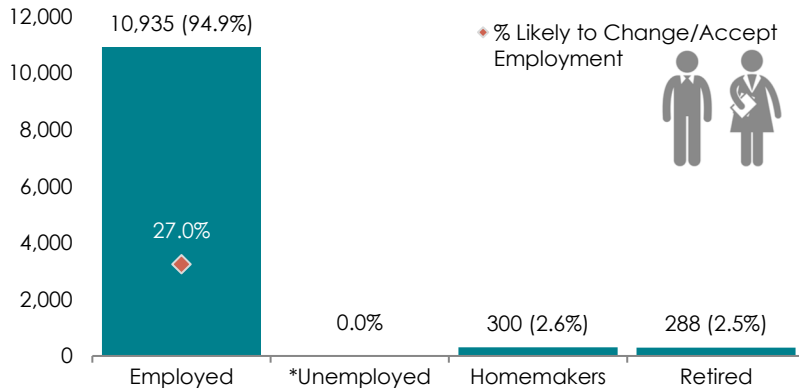
CURRENT BENEFITS:



DESIRED BENEFITS:



ESTIMATED TOTAL BY EMPLOYMENT STATUS (PERCENTAGE):



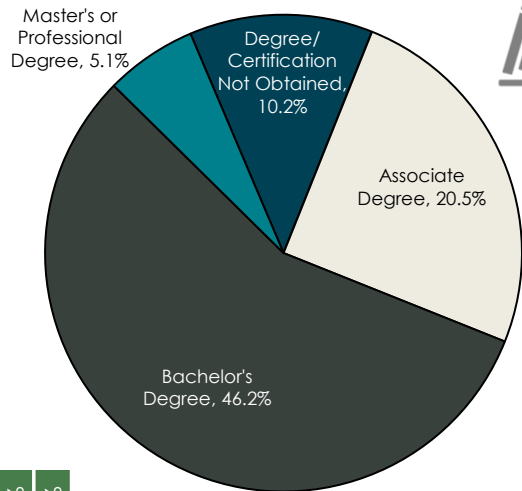
**Employment status is self-identified by the survey respondent. The unemployment percentage does not reflect the unemployment rate published by the U.S. Bureau of Labor Statistics, which applies a stricter definition.*

EMPLOYMENT STATS:

- 51.3% paid an hourly wage
- 92.3% are/were employed full-time
- 7.7% are/were employed part-time
- 18.9% are/were self-employed
- 13.5% hold two or more jobs
- Currently working an average of 42 hours/week

EDUCATIONAL LEVEL:

(82.0% HAVE AN EDUCATION BEYOND HIGH SCHOOL)



TOP JOB SEARCH RESOURCES:

(For those seeking employment opportunities, by use.)

- Internet - 69.2%
 - www.indeed.com
 - www.facebook.com
 - www.linkedin.com
- Networking through friends, family or acquaintances - 56.4%
- IowaWORKS Centers - 30.8%
- Newspapers - 25.6%



LABOR CHARACTERISTICS



FINANCIAL SERVICES

OCCUPATION	OCCUPATIONAL CODE	MEAN WAGE	ENTRY WAGE	EXPERIENCED WAGE	MEDIAN WAGE	MEAN ANNUAL SALARY
Accountants and Auditors	13-2011	\$34.28	\$25.49	\$38.68	\$32.24	\$71,306
Actuaries	15-2011	\$57.23	\$42.33	\$64.69	\$52.35	\$119,046
Bill and Account Collectors	43-3011	\$16.91	\$12.83	\$18.94	\$16.82	\$35,164
Billing and Posting Clerks	43-3021	\$17.58	\$13.43	\$19.66	\$17.31	\$36,572
Bookkeeping, Accounting, and Auditing Clerks	43-3031	\$18.41	\$13.81	\$20.71	\$18.15	\$38,289
Brokerage Clerks	43-4011	\$20.30	\$17.25	\$21.82	\$19.91	\$42,220
Claims Adjusters, Examiners, and Investigators	13-1031	\$31.24	\$22.33	\$35.69	\$30.26	\$64,973
Compliance Officers	13-1041	\$31.97	\$22.75	\$36.58	\$30.71	\$66,499
Credit Analysts	13-2041	\$31.86	\$22.60	\$36.49	\$29.47	\$66,265
Credit Counselors	13-2071	\$18.61	\$14.56	\$20.64	\$18.16	\$38,709
Customer Service Representatives	43-4051	\$17.21	\$13.10	\$19.27	\$16.74	\$35,803
Financial Examiners	13-2061	\$48.90	\$27.33	\$59.68	\$44.08	\$101,710
First-Line Supervisors of Non-Retail Sales Workers	41-1012	\$51.45	\$31.41	\$61.47	\$45.85	\$107,013
First-Line Supervisors of Office and Administrative Support Workers	43-1011	\$26.96	\$18.56	\$31.17	\$25.74	\$56,086
Insurance Claims and Policy Processing Clerks	43-9041	\$18.58	\$16.08	\$19.83	\$18.30	\$38,646
Insurance Sales Agents	41-3021	\$34.34	\$19.11	\$41.95	\$29.91	\$71,421
Insurance Underwriters	13-2053	\$33.78	\$24.83	\$38.26	\$32.97	\$70,271
Loan Interviewers and Clerks	43-4131	\$19.15	\$16.12	\$20.66	\$18.84	\$39,826
Loan Officers	13-2072	\$34.77	\$24.56	\$39.87	\$32.67	\$72,320
New Accounts Clerks	43-4141	\$17.82	\$15.12	\$19.17	\$17.81	\$37,061
Personal Financial Advisors	13-2052	\$38.71	\$22.93	\$46.60	\$31.56	\$80,523
Securities, Commodities, and Financial Services Sales Agents	41-3031	\$39.32	\$20.33	\$48.82	\$27.04	\$81,793
Statisticians	15-2041	\$25.38	\$17.16	\$29.49	\$18.93	\$52,786
Telemarketers	41-9041	\$12.89	\$10.99	\$13.83	\$12.42	\$26,807
Tellers	43-3071	\$14.91	\$12.75	\$15.99	\$14.53	\$31,007

The 2021 Iowa Wage data for the Sioux Center, IA Laborshed area was produced by the Labor Force & Occupational Analysis Bureau to provide communities local information on wages by occupation. The source of the wage and employment data is based on the May 2020 OES estimates. Additional occupational wage and employment data can be found at www.iowalmi.gov/laborshed.