

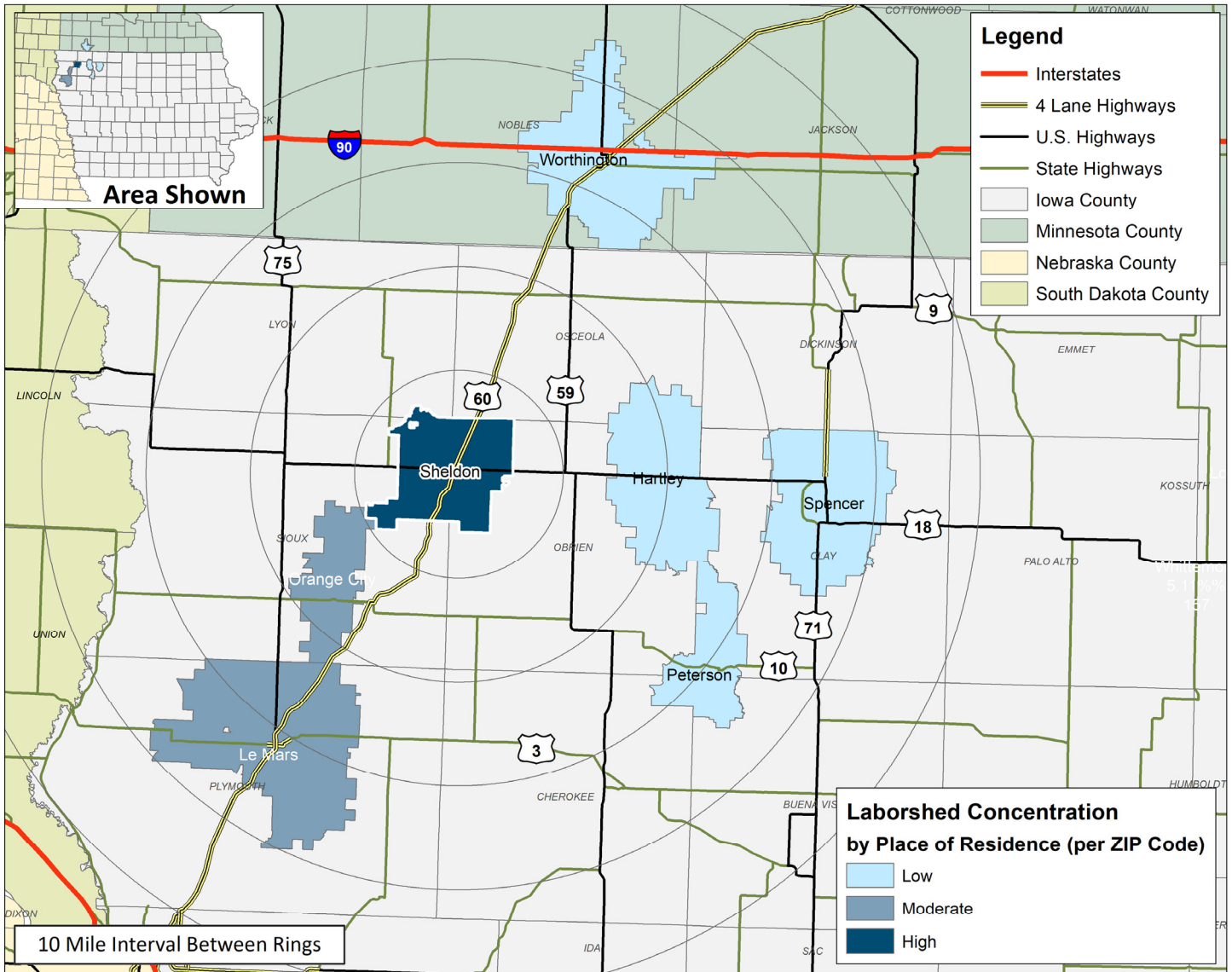
# LABOR CHARACTERISTICS

## FINANCIAL SERVICES



### SHELDON, IA LABORSHED AREA

CONCENTRATION OF RESPONDENTS WITHIN THE LABORSHED AREA  
WITH TRANSFERABLE EXPERIENCE/SKILLS BY PLACE OF RESIDENCE



Workers who have transferable experience/skills in the industry are currently commuting an average of 10 miles one way for work. Those who are likely to change/accept employment are willing to commute an average of 20 miles one way for the right employment opportunity.

FOR MORE INFORMATION REGARDING THE SHELDON, IA LABORSHED, CONTACT:

Sheldon Chamber and Development Corporation  
416 9th St | PO Box 276 | Sheldon, IA 51201  
Phone: (712) 324-2813 | E-mail: [cstrouth@cityofsheldon.com](mailto:cstrouth@cityofsheldon.com)  
[www.sheldoniowa.com](http://www.sheldoniowa.com)

# LABOR CHARACTERISTICS



## FINANCIAL SERVICES

### ESTIMATED AVAILABLE LABOR PER OCCUPATIONAL CATEGORY:

- Accountants and Auditors - 761
- Bill and Account Collectors - 192
- Billing and Posting Clerks - 193
- Bookkeeping, Accounting, and Auditing Clerks - 381
- Computer and Information Systems Managers - 187
- Customer Service Representatives - 762
- Financial Analysts - 188
- Financial Managers - 379
- Financial Specialists, All Other - 190
- First-Line Supervisors of Office and Administrative Support Workers - 380
- Loan Officers - 189
- Securities, Commodities, and Financial Services Sales Agents - 191

AN ESTIMATED TOTAL OF **3,993** PEOPLE IN THE LABORSHED AREA

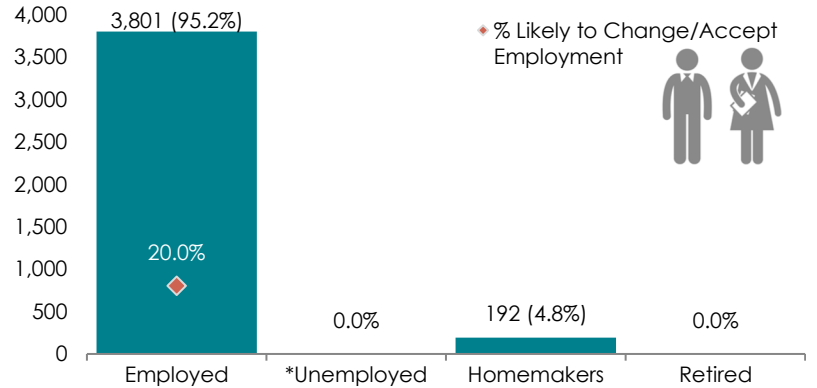
### UNDEREMPLOYMENT (ESTIMATED):

- Low hours - 0.0%
- Low income - 0.0%
- Mismatch of skills - 0.0%
- Total - 0.0%

(Individuals counted only once when estimating Total Underemployment.)



### ESTIMATED TOTAL BY EMPLOYMENT STATUS (PERCENTAGE):



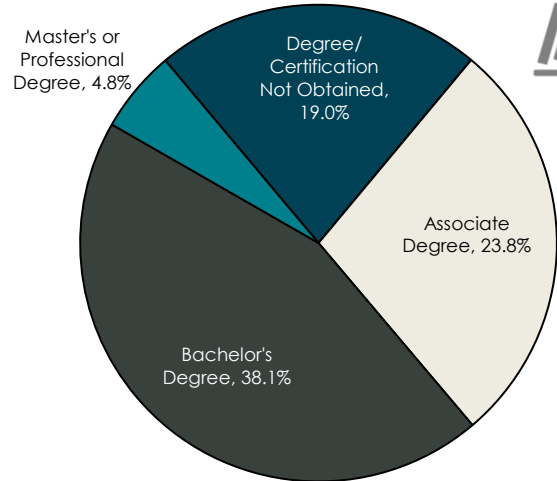
\*Employment status is self-identified by the survey respondent. The unemployment percentage does not reflect the unemployment rate published by the U.S. Bureau of Labor Statistics, which applies a stricter definition.

### EMPLOYMENT STATS:

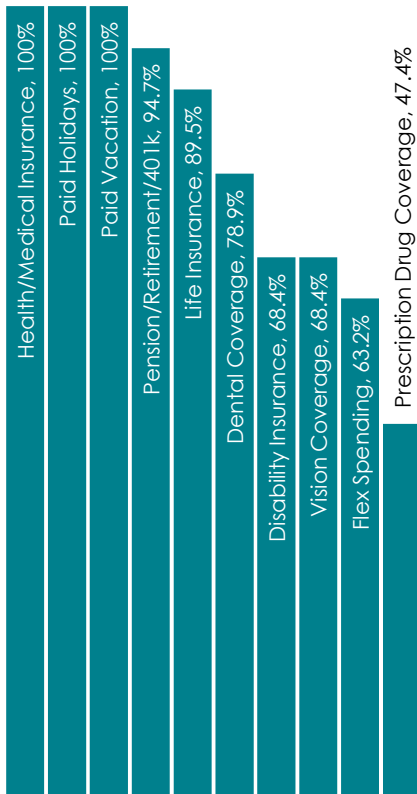
- 61.9% paid an annual salary
- 100% are/were employed full-time
- 0.0% are/were employed part-time
- 10.0% are/were self-employed
- 15.0% hold two or more jobs
- Currently working an average of 45 hours/week

### EDUCATIONAL LEVEL:

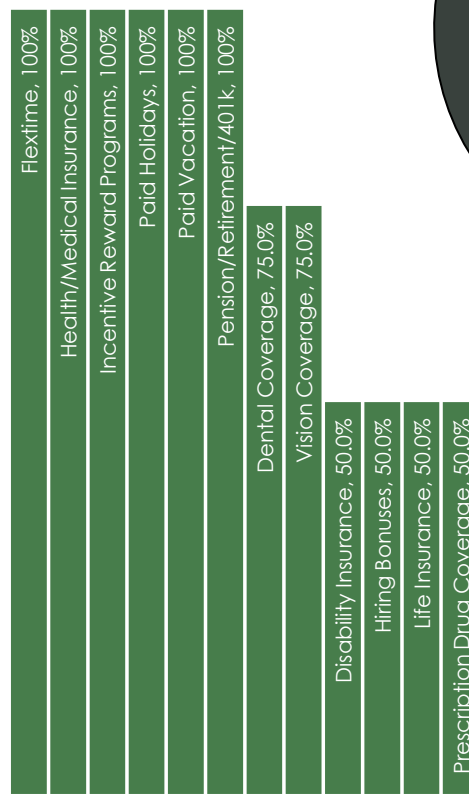
(85.7% HAVE AN EDUCATION BEYOND HIGH SCHOOL)



### CURRENT BENEFITS:



### DESIRED BENEFITS:



### TOP JOB SEARCH RESOURCES:

(For those seeking employment opportunities, by use.)

- Internet - 80.0%
  - [www.indeed.com](http://www.indeed.com)
  - [www.linkedin.com](http://www.linkedin.com)
  - [www.facebook.com](http://www.facebook.com)
  - [www.monster.com](http://www.monster.com)
- Networking through friends, family or acquaintances - 55.0%
- Newspapers - 30.0%
- Private Employment Services - 10.0%



# LABOR CHARACTERISTICS



## FINANCIAL SERVICES

OCCUPATION	OCCUPATIONAL CODE	MEAN WAGE	ENTRY WAGE	EXPERIENCED WAGE	MEDIAN WAGE	MEAN ANNUAL SALARY
Accountants and Auditors	13-2011	\$30.31	\$21.54	\$34.69	\$28.37	\$63,036
Billing and Posting Clerks	43-3021	\$19.17	\$16.09	\$20.72	\$18.51	\$39,883
Bookkeeping, Accounting, and Auditing Clerks	43-3031	\$19.00	\$12.16	\$22.42	\$18.46	\$39,516
Brokerage Clerks	43-4011	\$18.95	\$13.83	\$21.52	\$16.61	\$39,426
Compliance Officers	13-1041	\$32.23	\$21.47	\$37.62	\$30.04	\$67,042
Credit Analysts	13-2041	\$29.70	\$25.57	\$31.76	\$28.89	\$61,768
Customer Service Representatives	43-4051	\$17.39	\$12.88	\$19.64	\$16.73	\$36,167
First-Line Supervisors of Office and Administrative Support Workers	43-1011	\$28.83	\$18.97	\$33.76	\$25.25	\$59,970
Insurance Sales Agents	41-3021	\$37.39	\$17.03	\$47.57	\$28.00	\$77,772
Insurance Underwriters	13-2053	\$40.89	\$30.81	\$45.94	\$42.92	\$85,061
Loan Interviewers and Clerks	43-4131	\$19.16	\$16.45	\$20.52	\$18.76	\$39,860
Loan Officers	13-2072	\$42.08	\$26.57	\$49.83	\$38.02	\$87,517
Personal Financial Advisors	13-2052	\$38.28	\$21.12	\$46.85	\$34.56	\$79,614
Tellers	43-3071	\$15.63	\$12.88	\$17.00	\$15.12	\$32,511

The 2021 Iowa Wage data for the Sheldon, IA Laborshed area was produced by the Labor Force & Occupational Analysis Bureau to provide communities local information on wages by occupation. The source of the wage and employment data is based on the May 2020 OES estimates. Additional occupational wage and employment data can be found at [www.iowalmi.gov/laborshed](http://www.iowalmi.gov/laborshed).

