

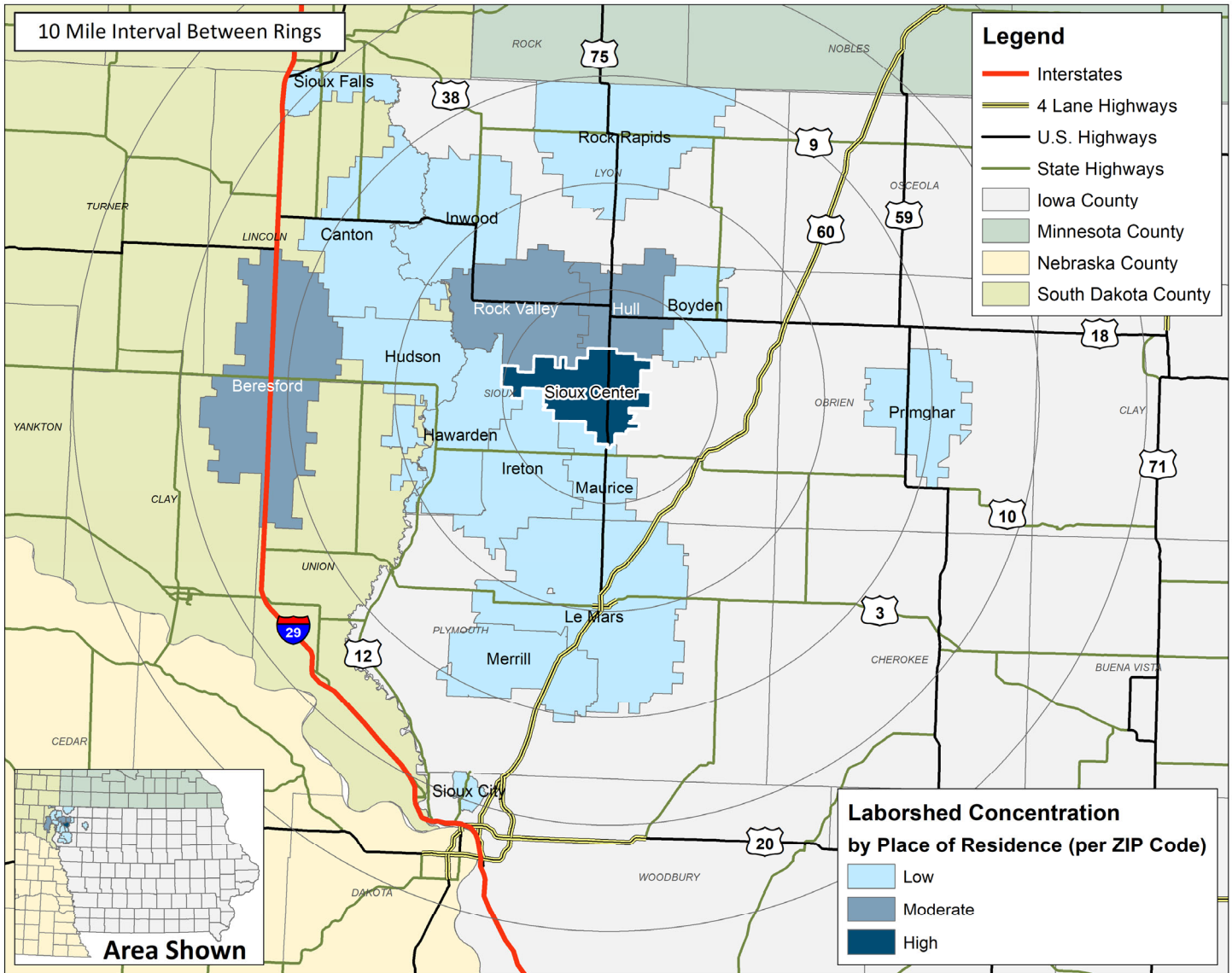
LABOR CHARACTERISTICS

BIOTECHNOLOGY



SIOUX CENTER, IA LABORSHED AREA

CONCENTRATION OF RESPONDENTS WITHIN THE LABORSHED AREA WITH TRANSFERABLE EXPERIENCE/SKILLS BY PLACE OF RESIDENCE



Workers who have transferable experience/skills in the industry are currently commuting an average of 9 miles one way for work. Those who are likely to change/accept employment are willing to commute an average of 18 miles one way for the right employment opportunity.

FOR MORE INFORMATION REGARDING THE SIOUX CENTER, IA LABORSHED, CONTACT:

Sioux Center Economic Development
335 1st Ave NW
Sioux Center, IA 51250
Phone: (712) 722-0761 | E-mail: ddokter@siouxcenter.org
www.siouxcenter.org

LABOR CHARACTERISTICS



BIOTECHNOLOGY

ESTIMATED AVAILABLE LABOR PER OCCUPATIONAL CATEGORY:

- Architectural and Engineering Managers - 592
- Biological Technicians - 293
- Dietetic Technicians - 296
- Dietitians and Nutritionists - 594
- Engineers, All Other - 1,481
- Farmers, Ranchers, and Other Agricultural Managers - 5,035
- Farmworkers and Laborers, Crop, Nursery, and Greenhouse - 297
- Farmworkers, Farm, Ranch, and Aquacultural Animals - 298
- First-Line Supervisors of Production and Operating Workers - 1,482
- Industrial Engineers - 593
- Industrial Production Managers - 1,480
- Inspectors, Testers, Sorters, Samplers, and Weighers - 299
- Life, Physical, and Social Science Technicians, All Other - 294
- Medical and Clinical Laboratory Technicians - 295
- Veterinary Technologists and Technicians - 595

AN ESTIMATED TOTAL OF **13,924** PEOPLE IN THE LABORSHED AREA

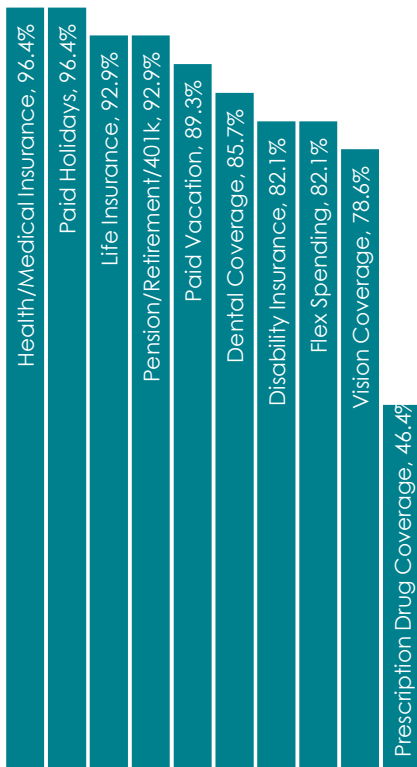
UNDEREMPLOYMENT (ESTIMATED):

- Low hours - 0.0%
- Mismatch of skills - 2.1% (34)
- Low income - 0.0%
- Total - 2.1% (34)

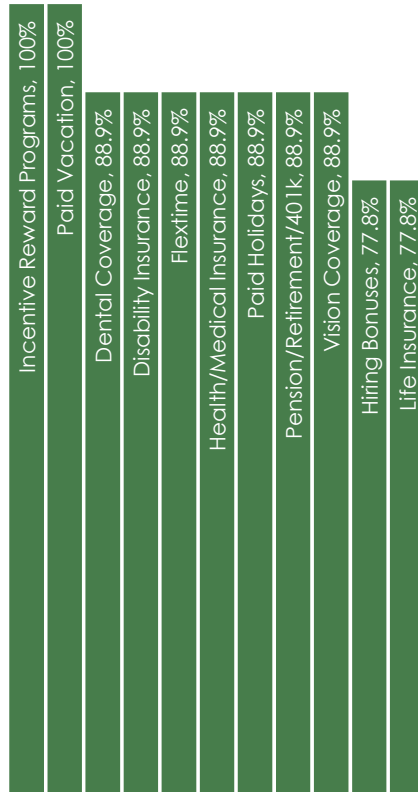
(Individuals counted only once when estimating Total Underemployment.)



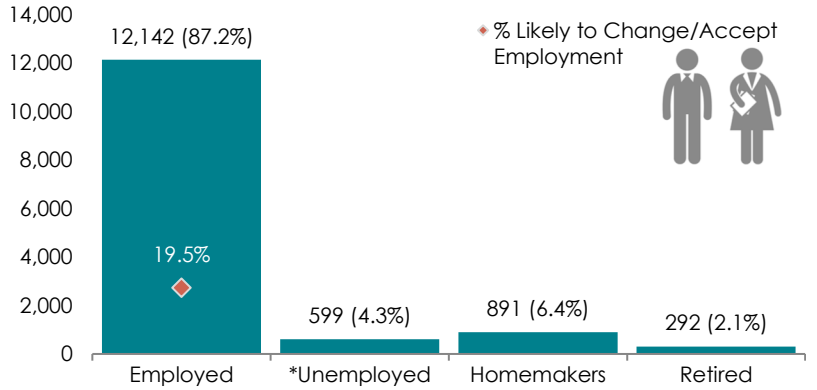
CURRENT BENEFITS:



DESIRED BENEFITS:



ESTIMATED TOTAL BY EMPLOYMENT STATUS (PERCENTAGE):



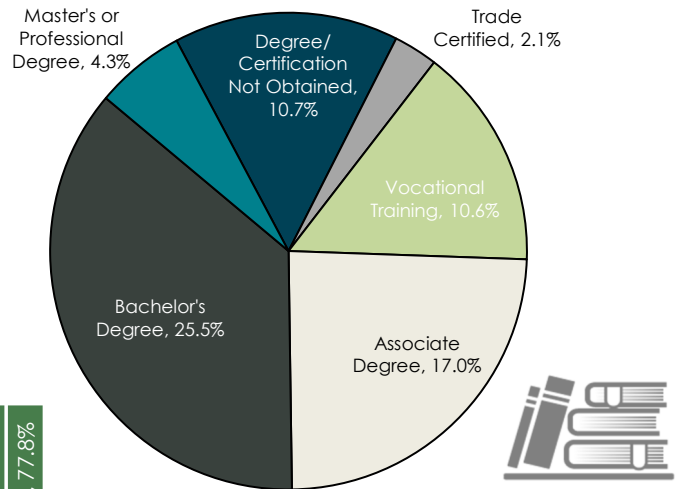
**Employment status is self-identified by the survey respondent. The unemployment percentage does not reflect the unemployment rate published by the U.S. Bureau of Labor Statistics, which applies a stricter definition.*

EMPLOYMENT STATS:

- 55.3% paid an annual salary
- 91.5% are/were employed full-time
- 8.5% are/were employed part-time
- 39.0% are/were self-employed
- 22.0% hold two or more jobs
- Currently working an average of 50 hours/week

EDUCATIONAL LEVEL:

(70.2% HAVE AN EDUCATION BEYOND HIGH SCHOOL)



TOP JOB SEARCH RESOURCES:

(For those seeking employment opportunities, by use.)

- Networking through friends, family or acquaintances - 70.2%
- www.indeed.com
- www.facebook.com
- www.linkedin.com
- Internet - 61.7%
- Newspapers - 38.3%
- Private Employment Services - 21.3%



LABOR CHARACTERISTICS



BIOTECHNOLOGY

OCCUPATION	OCCUPATIONAL CODE	MEAN WAGE	ENTRY WAGE	EXPERIENCED WAGE	MEDIAN WAGE	MEAN ANNUAL SALARY
Agricultural Inspectors	45-2011	\$26.51	\$18.95	\$30.28	\$25.65	\$55,134
Animal Scientists	19-1011	\$29.44	\$22.31	\$33.01	\$28.93	\$61,241
Biological Technicians	19-4021	\$14.95	\$13.63	\$15.60	\$14.51	\$31,089
Chemical Equipment Operators and Tenders	51-9011	\$29.71	\$19.53	\$34.79	\$32.07	\$61,789
Chemical Technicians	19-4031	\$23.05	\$17.84	\$25.65	\$22.46	\$47,943
Conservation Scientists	19-1031	\$29.97	\$24.51	\$32.69	\$29.40	\$62,332
Dietetic Technicians	29-2051	\$14.19	\$10.21	\$16.19	\$13.89	\$29,520
Dietitians and Nutritionists	29-1031	\$26.05	\$20.74	\$28.70	\$25.50	\$54,178
Engineers, All Other	17-2199	\$42.22	\$32.35	\$47.15	\$44.26	\$87,812
Environmental Engineers	17-2081	\$40.63	\$33.77	\$44.06	\$39.94	\$84,510
Environmental Scientists and Specialists, Including Health	19-2041	\$31.95	\$26.97	\$34.44	\$30.35	\$66,459
First-Line Supervisors of Farming, Fishing, and Forestry Workers	45-1011	\$31.28	\$25.79	\$34.03	\$29.06	\$65,072
First-Line Supervisors of Production and Operating Workers	51-1011	\$30.38	\$23.51	\$33.81	\$29.31	\$63,181
Food Scientists and Technologists	19-1012	\$30.55	\$21.54	\$35.06	\$28.75	\$63,544
Industrial Engineers	17-2112	\$40.56	\$30.46	\$45.62	\$38.43	\$84,373
Inspectors, Testers, Sorters, Samplers, and Weighers	51-9061	\$18.97	\$14.84	\$21.03	\$17.89	\$39,450
Life, Physical, and Social Science Technicians, All Other	19-4099	\$22.33	\$13.81	\$26.60	\$19.23	\$46,455
Medical Scientists, Except Epidemiologists	19-1042	\$49.84	\$25.60	\$61.97	\$42.47	\$103,678
Nuclear Medicine Technologists	29-2033	\$29.67	\$19.98	\$34.52	\$29.10	\$61,718
Plant and System Operators, All Other	51-8099	\$28.48	\$18.15	\$33.65	\$30.24	\$59,242
Separating, Filtering, Clarifying, Precipitating, and Still Machine Setters, Operators, and Tenders	51-9012	\$22.43	\$17.53	\$24.88	\$22.42	\$46,648
Soil and Plant Scientists	19-1013	\$31.71	\$23.74	\$35.70	\$31.09	\$65,964
Veterinary Technologists and Technicians	29-2056	\$16.70	\$14.46	\$17.82	\$16.87	\$34,736
Water and Wastewater Treatment Plant and System Operators	51-8031	\$24.83	\$19.66	\$27.42	\$24.57	\$51,655

The 2021 Iowa Wage data for the Sioux Center, IA Laborshed area was produced by the Labor Force & Occupational Analysis Bureau to provide communities local information on wages by occupation. The source of the wage and employment data is based on the May 2020 OES estimates. Additional occupational wage and employment data can be found at www.iowalmi.gov/laborshed.