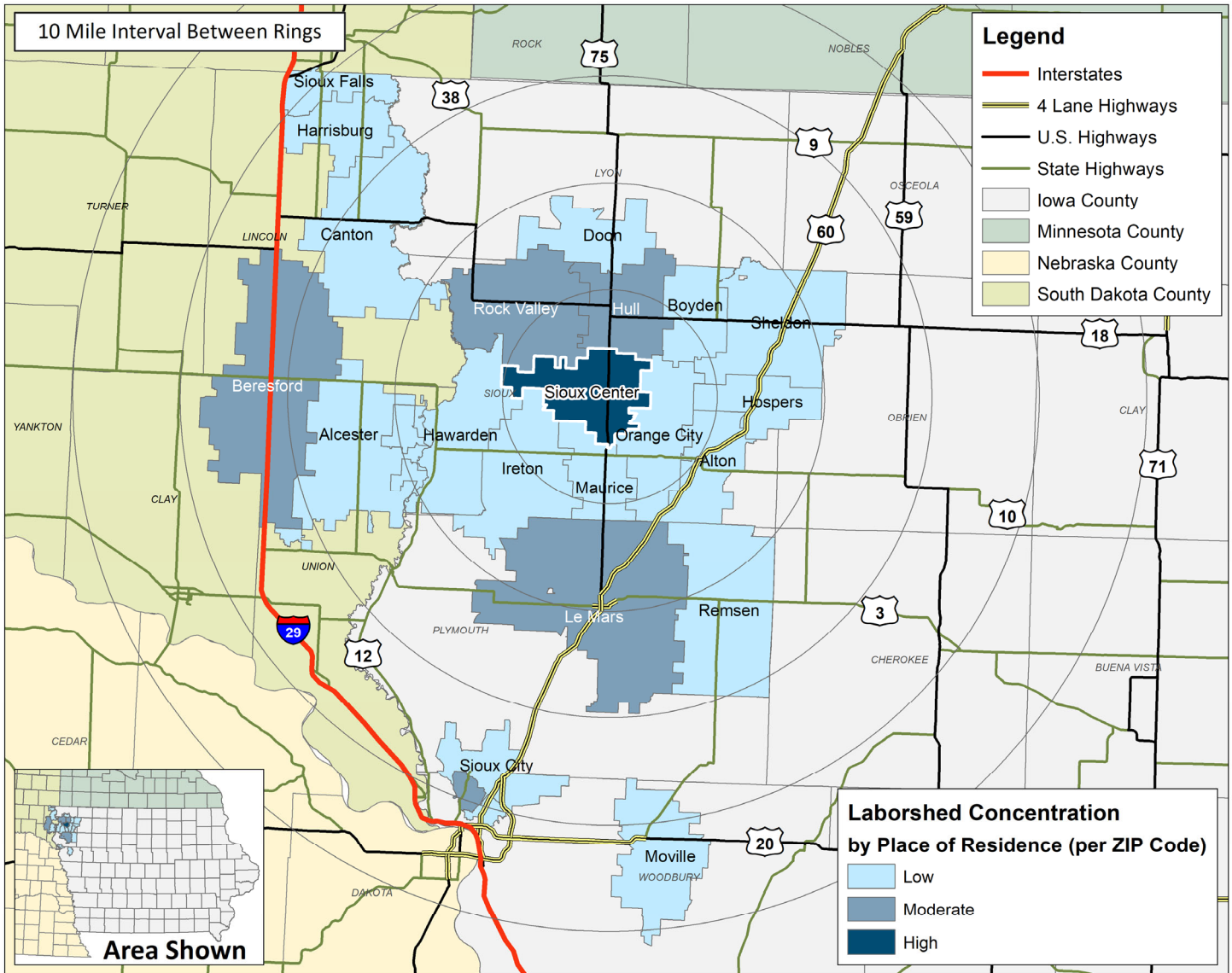


# LABOR CHARACTERISTICS

# ADVANCED MANUFACTURING

## SIOUX CENTER, IA LABORSHED AREA

CONCENTRATION OF RESPONDENTS WITHIN THE LABORSHED AREA  
WITH TRANSFERABLE EXPERIENCE/SKILLS BY PLACE OF RESIDENCE



Workers who have transferable experience/skills in the industry are currently commuting an average of 14 miles one way for work. Those who are likely to change/accept employment are willing to commute an average of 21 miles one way for the right employment opportunity.

FOR MORE INFORMATION REGARDING THE SIOUX CENTER, IA LABORSHED, CONTACT:

Sioux Center Economic Development  
335 1st Ave NW  
Sioux Center, IA 51250  
Phone: (712) 722-0761 | E-mail: [ddokter@siouxcenter.org](mailto:ddokter@siouxcenter.org)  
[www.siouxcenter.org](http://www.siouxcenter.org)

# LABOR CHARACTERISTICS



# ADVANCED MANUFACTURING

## ESTIMATED AVAILABLE LABOR PER OCCUPATIONAL CATEGORY:

- Architectural and Engineering Managers - 592
- Bus and Truck Mechanics and Diesel Engine Specialists - 595
- Electrical Engineers - 293
- Electricians - 594
- Engineers, All Other - 1,485
- First-Line Supervisors of Mechanics, Installers, and Repairers - 1,486
- First-Line Supervisors of Production and Operating Workers - 1,487
- Heavy and Tractor-Trailer Truck Drivers - 2,376
- Industrial Engineers - 593
- Industrial Production Managers - 1,484
- Inspectors, Testers, Sorters, Samplers, and Weighers - 300
- Installation, Maintenance, and Repair Workers, All Other - 296
- Laborers and Freight, Stock, and Material Movers, Hand - 1,488
- Light Truck or Delivery Services Drivers - 890
- Machinists - 298
- Materials Engineers - 294
- Mechanical Engineering Technicians - 295
- Multiple Machine Tool Setters, Operators, and Tenders, Metal and Plastic - 299
- Packers and Packagers, Hand - 597
- Production Workers, All Other - 1,189
- Tank Car, Truck, and Ship Loaders - 301
- Team Assemblers - 297
- Welders, Cutters, Solderers, and Brazers - 596

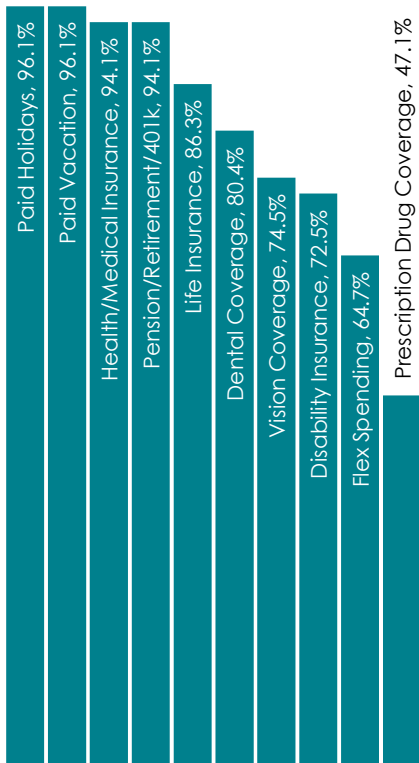
AN ESTIMATED TOTAL OF **18,125** PEOPLE IN THE LABORSHED AREA

## UNDEREMPLOYMENT (ESTIMATED):

- Low hours - 1.6% (34)
- Low income - 1.6% (34)
- Mismatch of skills - 4.9% (104)
- Total - 8.2% (174)

*(Individuals counted only once when estimating Total Underemployment.)*

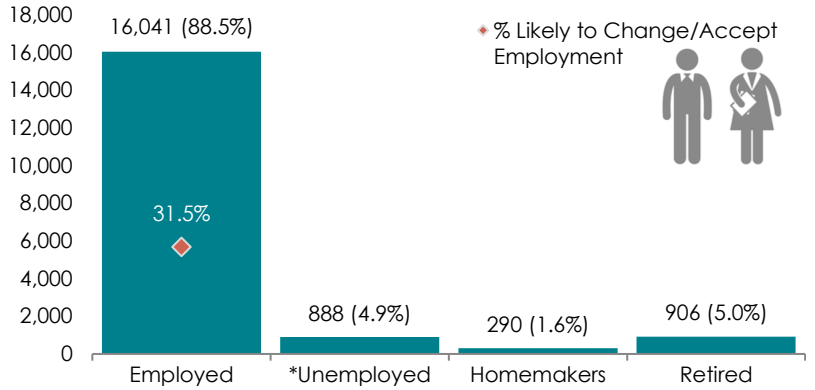
## CURRENT BENEFITS:



## DESIRED BENEFITS:



## ESTIMATED TOTAL BY EMPLOYMENT STATUS (PERCENTAGE):



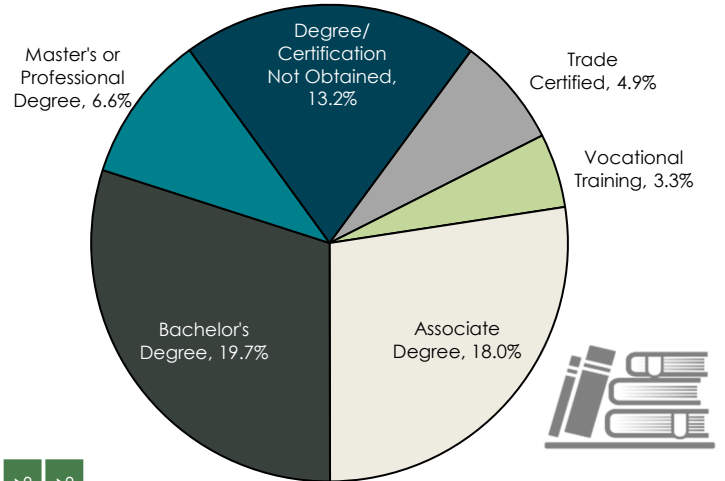
*\*Employment status is self-identified by the survey respondent. The unemployment percentage does not reflect the unemployment rate published by the U.S. Bureau of Labor Statistics, which applies a stricter definition.*

## EMPLOYMENT STATS:

- 52.5% paid an hourly wage
- 90.2% are/were employed full-time
- 9.8% are/were employed part-time
- 13.0% are/were self-employed
- 11.1% hold two or more jobs
- Currently working an average of 46 hours/week

## EDUCATIONAL LEVEL:

(65.7% HAVE AN EDUCATION BEYOND HIGH SCHOOL)



## TOP JOB SEARCH RESOURCES:

*(For those seeking employment opportunities, by use.)*

- Internet - 71.7%
  - [www.indeed.com](http://www.indeed.com)
  - [www.linkedin.com](http://www.linkedin.com)
  - [www.facebook.com](http://www.facebook.com)
- Networking through friends, family or acquaintances - 46.7%
- Newspapers - 23.3%
- IowaWORKS Centers - 18.3%



# LABOR CHARACTERISTICS



# ADVANCED MANUFACTURING

OCCUPATION	OCCUPATIONAL CODE	MEAN WAGE	ENTRY WAGE	EXPERIENCED WAGE	MEDIAN WAGE	MEAN ANNUAL SALARY
Bus and Truck Mechanics and Diesel Engine Specialists	49-3031	\$23.73	\$17.58	\$26.81	\$23.48	\$49,365
Chemical Equipment Operators and Tenders	51-9011	\$29.71	\$19.53	\$34.79	\$32.07	\$61,789
Cleaning, Washing, and Metal Pickling Equipment Operators and Tenders	51-9192	\$16.50	\$11.62	\$18.94	\$15.33	\$34,317
Computer Hardware Engineers	17-2061	\$45.10	\$36.08	\$49.61	\$44.44	\$93,810
Conveyor Operators and Tenders	53-7011	\$16.20	\$13.78	\$17.41	\$16.24	\$33,698
Crane and Tower Operators	53-7021	\$26.79	\$19.80	\$30.29	\$25.83	\$55,733
Crushing, Grinding, and Polishing Machine Setters, Operators, and Tenders	51-9021	\$19.21	\$16.80	\$20.42	\$18.91	\$39,958
Cutting, Punching, and Press Machine Setters, Operators, and Tenders, Metal and Plastic	51-4031	\$18.54	\$15.28	\$20.17	\$18.14	\$38,564
Electrical and Electronic Engineering Technicians	17-3023	\$31.32	\$21.10	\$36.43	\$32.55	\$65,152
Electrical and Electronics Repairers, Commercial and Industrial Equipment	49-2094	\$25.35	\$19.81	\$28.12	\$25.33	\$52,724
Electrical Engineers	17-2071	\$44.81	\$34.21	\$50.11	\$44.13	\$93,205
Electricians	47-2111	\$23.86	\$16.80	\$27.39	\$23.43	\$49,632
Electronics Engineers, Except Computer	17-2072	\$44.10	\$36.09	\$48.11	\$42.38	\$91,738
Engine and Other Machine Assemblers	51-2031	\$20.10	\$17.58	\$21.36	\$19.46	\$41,804
Engineers, All Other	17-2199	\$42.22	\$32.35	\$47.15	\$44.26	\$87,812
Extruding, Forming, Pressing, and Compacting Machine Setters, Operators, and Tenders	51-9041	\$16.74	\$13.93	\$18.15	\$16.87	\$34,826
First-Line Supervisors of Mechanics, Installers, and Repairers	49-1011	\$32.06	\$18.84	\$38.66	\$32.85	\$66,676
First-Line Supervisors of Production and Operating Workers	51-1011	\$30.38	\$23.51	\$33.81	\$29.31	\$63,181
Grinding, Lapping, Polishing, and Buffing Machine Tool Setters, Operators, and Tenders, Metal and Plastic	51-4033	\$15.35	\$10.92	\$17.56	\$15.86	\$31,924
Heavy and Tractor-Trailer Truck Drivers	53-3032	\$21.16	\$14.37	\$24.55	\$21.34	\$44,009
Helpers--Production Workers	51-9198	\$18.20	\$13.22	\$20.69	\$17.21	\$37,850
Industrial Engineering Technicians	17-3026	\$21.43	\$17.33	\$23.48	\$21.42	\$44,572
Industrial Engineers	17-2112	\$40.56	\$30.46	\$45.62	\$38.43	\$84,373
Industrial Machinery Mechanics	49-9041	\$25.12	\$20.33	\$27.51	\$25.32	\$52,243
Industrial Truck and Tractor Operators	53-7051	\$18.37	\$14.18	\$20.47	\$17.98	\$38,218
Inspectors, Testers, Sorters, Samplers, and Weighers	51-9061	\$18.97	\$14.84	\$21.03	\$17.89	\$39,450
Installation, Maintenance, and Repair Workers, All Other	49-9099	\$22.08	\$16.65	\$24.79	\$21.47	\$45,923
Light Truck or Delivery Services Drivers	53-3033	\$18.01	\$11.96	\$21.03	\$16.86	\$37,461
Machine Feeders and Offbearers	53-7063	\$16.64	\$14.06	\$17.92	\$17.14	\$34,607
Machinists	51-4041	\$20.12	\$16.47	\$21.95	\$19.42	\$41,853
Maintenance and Repair Workers, General	49-9071	\$19.41	\$15.04	\$21.59	\$19.12	\$40,364
Maintenance Workers, Machinery	49-9043	\$24.54	\$17.83	\$27.89	\$24.08	\$51,045
Mechanical Drafters	17-3013	\$23.43	\$17.91	\$26.19	\$22.57	\$48,740
Mechanical Engineering Technicians	17-3027	\$21.86	\$16.12	\$24.72	\$21.66	\$45,458
Mechanical Engineers	17-2141	\$37.02	\$27.67	\$41.69	\$36.36	\$76,998
Milling and Planing Machine Setters, Operators, and Tenders, Metal and Plastic	51-4035	\$20.76	\$17.11	\$22.58	\$21.09	\$43,177
Millwrights	49-9044	\$22.10	\$16.63	\$24.83	\$21.31	\$45,964
Mixing and Blending Machine Setters, Operators, and Tenders	51-9023	\$19.19	\$15.08	\$21.25	\$18.33	\$39,924
Molders, Shapers, and Casters, Except Metal and Plastic	51-9195	\$15.00	\$13.91	\$15.54	\$14.64	\$31,193
Multiple Machine Tool Setters, Operators, and Tenders, Metal and Plastic	51-4081	\$21.38	\$17.51	\$23.32	\$21.23	\$44,471
Packaging and Filling Machine Operators and Tenders	51-9111	\$16.13	\$13.64	\$17.38	\$16.21	\$33,553
Plant and System Operators, All Other	51-8099	\$28.48	\$18.15	\$33.65	\$30.24	\$59,242
Plating and Coating Machine Setters, Operators, and Tenders, Metal and Plastic	51-4193	\$19.11	\$15.28	\$21.02	\$19.49	\$39,740
Production Workers, All Other	51-9199	\$15.09	\$11.32	\$16.97	\$14.42	\$31,384
Rolling Machine Setters, Operators, and Tenders, Metal and Plastic	51-4023	\$19.86	\$13.91	\$22.83	\$19.48	\$41,310
Separating, Filtering, Clarifying, Precipitating, and Still Machine Setters, Operators, and Tenders	51-9012	\$22.43	\$17.53	\$24.88	\$22.42	\$46,648
Structural Metal Fabricators and Fitters	51-2041	\$19.02	\$16.26	\$20.41	\$18.64	\$39,570
Tool and Die Makers	51-4111	\$23.93	\$19.08	\$26.36	\$23.31	\$49,784
Tool Grinders, Filers, and Sharpeners	51-4194	\$19.59	\$16.76	\$21.01	\$19.02	\$40,752
Water and Wastewater Treatment Plant and System Operators	51-8031	\$24.83	\$19.66	\$27.42	\$24.57	\$51,655
Welders, Cutters, Solderers, and Brazers	51-4121	\$20.34	\$16.45	\$22.28	\$19.61	\$42,299

The 2021 Iowa Wage data for the Sioux Center, IA Laborshed area was produced by the Labor Force & Occupational Analysis Bureau to provide communities local information on wages by occupation. The source of the wage and employment data is based on the May 2020 OES estimates. Additional occupational wage and employment data can be found at [www.iowalmi.gov/laborshed](http://www.iowalmi.gov/laborshed).